



HENAN KINO CRANES CO., LTD.

Leading crane manufacturer, focus on technology development.

HENAN KINO CRANES CO., LTD.

✉ info@kinocranes.com

☎ 0086-373-3809044

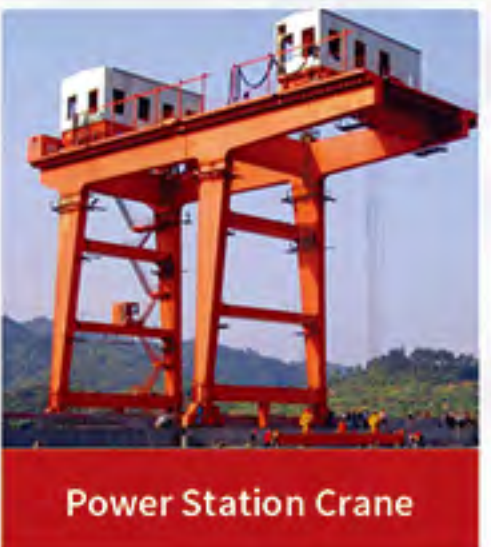
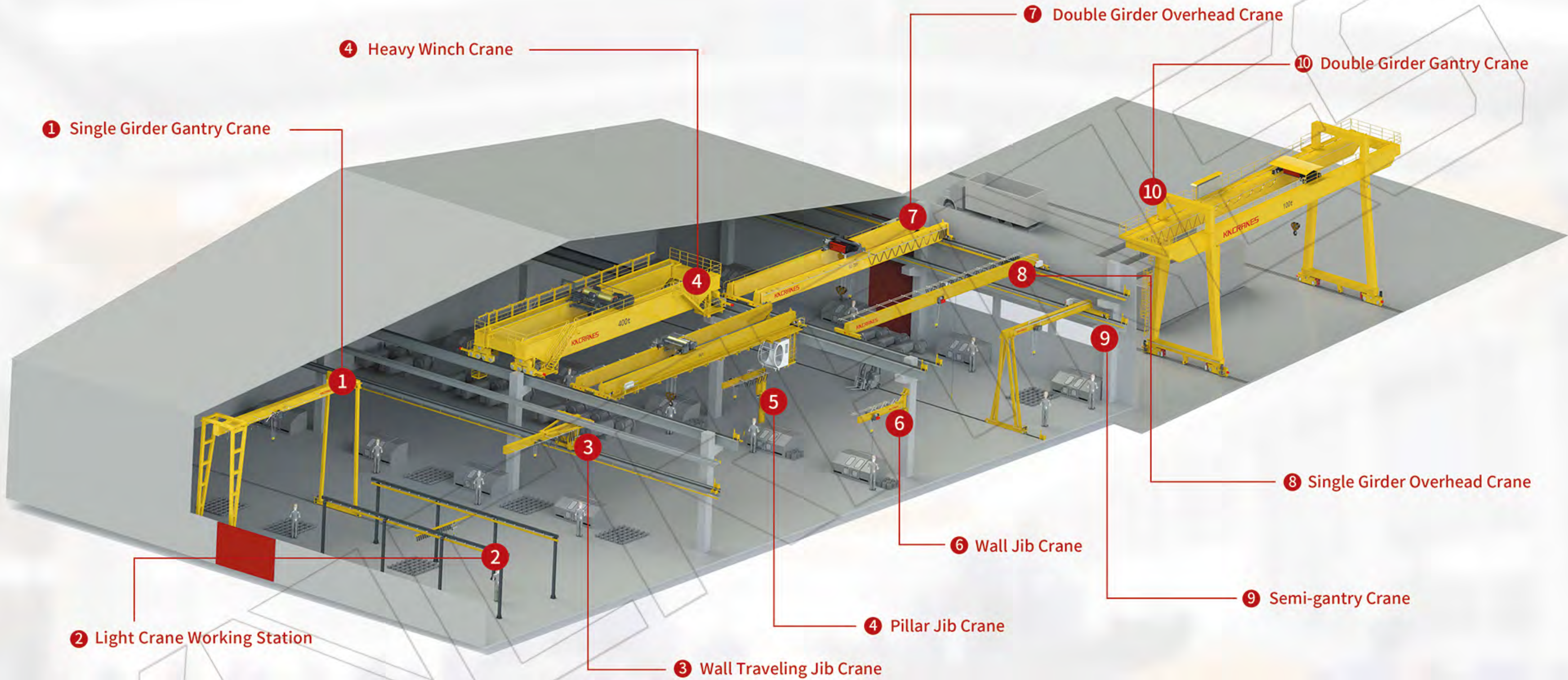
🌐 www.kinocranes.com

📠 0086-373-3809044

🏠 No.730, Xinghai Center, Hongqi District, Xinxiang, Henan, China

🏭 Weiqi Road, Crane Industrial Park, Changyuan County, Henan Province, China





>>> COMPANY PROFILE

Kinocranes is professional overhead crane and gantry crane solution provider. We integrate crane research & development, manufacturing, sales, installation and service. our products include European design double girder overhead crane, European design single girder overhead crane, European design suspension overhead crane, European design double girder gantry crane, European design single girder gantry crane, European design semi gantry crane, European design wall travelling crane, European design jib crane, European design double girder gantry light duty crane and general propose cranes, etc. Moreover, we have rich experience and are good at fully automatic intelligent cranes, metallurgical cranes, explosion-proof cranes, special cranes for upper aero-engine transportation, special cranes for aircraft maintenance, special cranes for nuclear power plants, special cranes for paper making, power plant cranes, and other special cranes, including various types of cranes components, European design open winch trolley, European design electric hoist, three-in-one drive motor, automatic control system, magnet, grab and related lifting equipment, etc.

>>> COMPANY ADVANTAGE

We have laser cutting machine, CNC plasma cutting system, box beam forming production line, automatic submerged arc welding system, complete machine pre-assembly platform, whole beam shot blasting processing line, automatic spray painting and other main beam production equipment, as well as CNC boring and milling machine, CNC gantry milling, CNC lathe, CNC wire cutting, vacuum dipping system and other parts production equipment.

We also have various monitoring instruments, such as laser range finder, total station, ultrasonic weld non-destructive flaw detector, magnetic particle flaw detector, paint film thickness gauge, hardness meter, ultrasonic steel thickness gauge, theodolite, roughness detector, dynamometer, motor dedicated testing center, etc., the well-trained professional production team is a strong guarantee for Kinocranes high-quality cranes.

Based on crane optimized design and variable frequency drive technology, our cranes are small in size, light in weight, good in maintenance-free performance, high work continuity, and optimized configurations, such as galvanized high-strength steel wire ropes, disc brakes, hard tooth surface reducers, programmable lifting limit, ductile iron rope guide, large diameter welding drum, etc., are innovative products in the domestic crane field.

We have exported our cranes to more than 30 countries and regions. We have established long term cooperation relationship with each customer. We have a professional and thoughtful sales and service team, and strive to provide customers with customized products.

We treat customers sincerely; we trust and respect the individual; we rely on teamwork to achieve common goals; we adhere to honesty and integrity in our business activities!

CERTIFICATIONS



ISO9001



ISO14001



ISO18001



Ex-proof



CE



CE



CE



License



Ex-proof



License

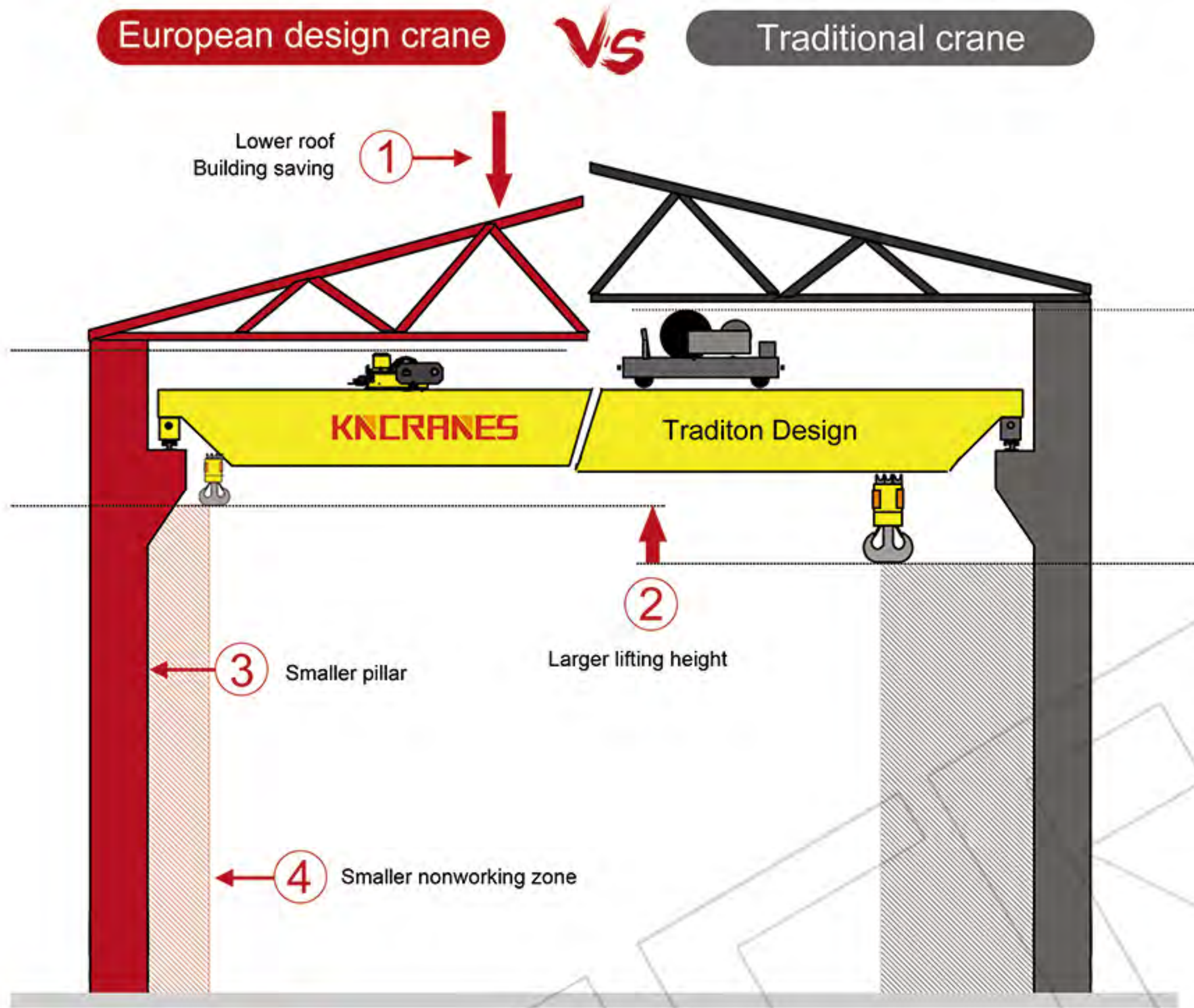


Embassy Award

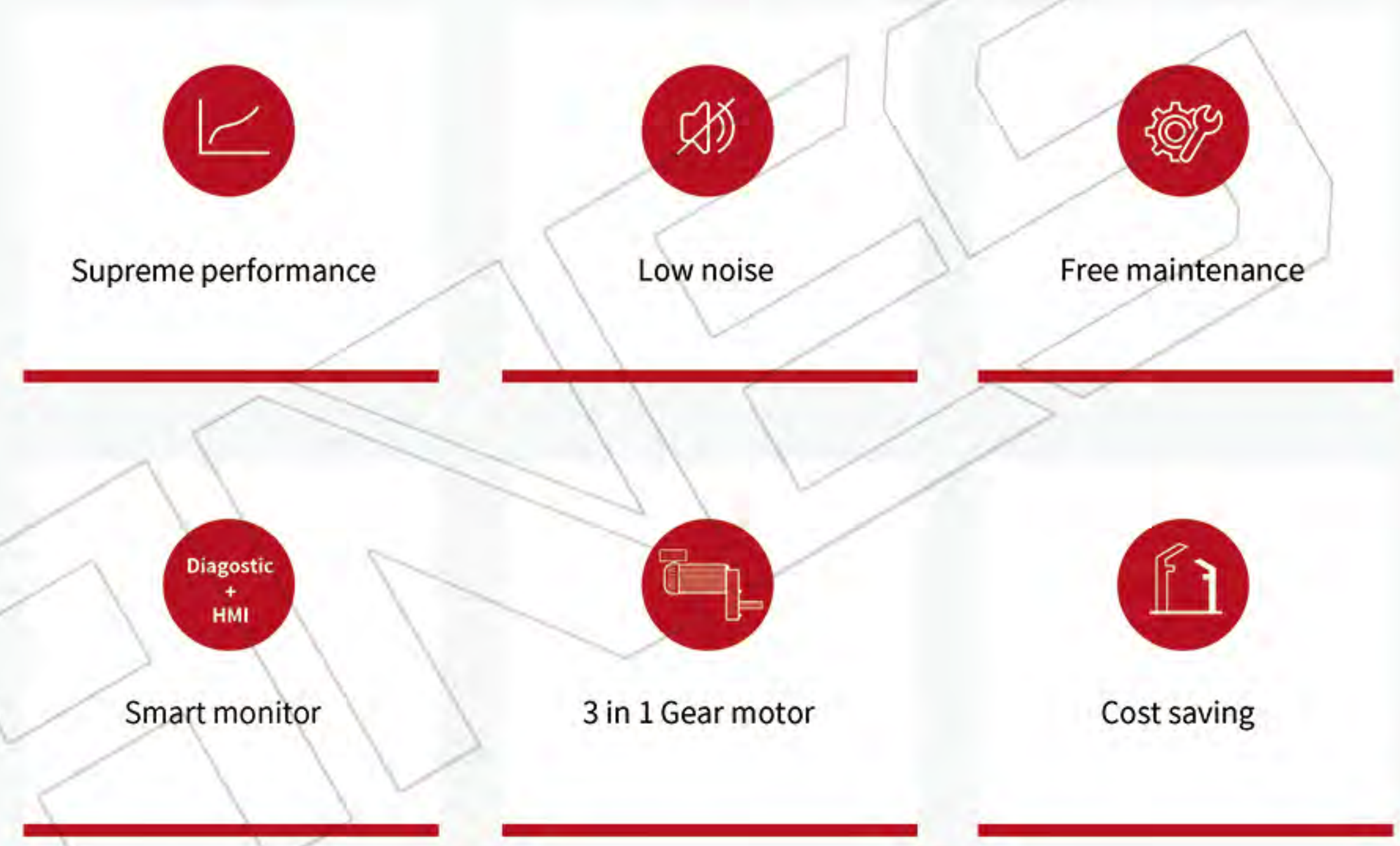


CE

Crane Advantages



Crane Advantages

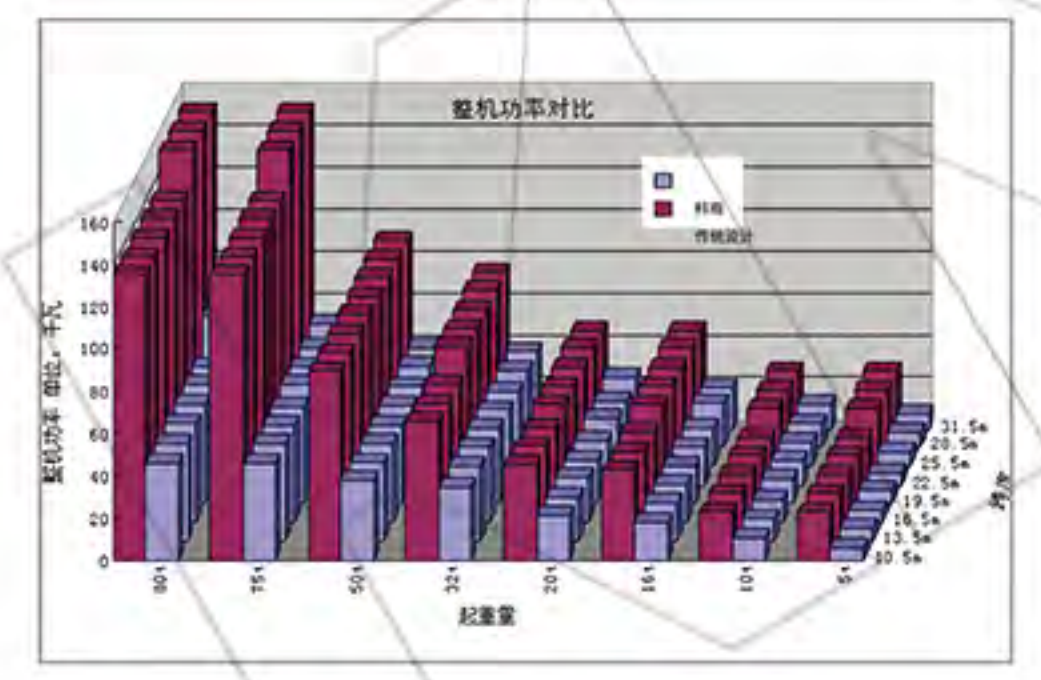


Crane duty classification

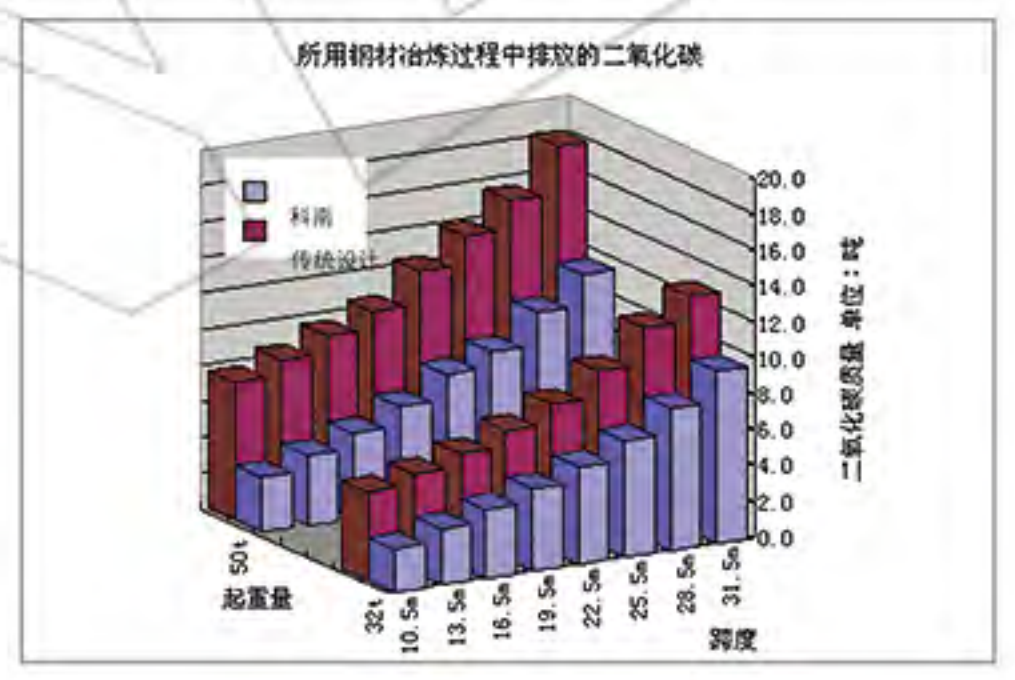
	Duty Class					
ISO/BS/DIN	M3	M4	M5	M6	M7	M8
GB	A3	A4	A5	A6	A7	A8
FEM	1Bm	1Am	2m	3m	4m	5m
CMAA	A	B	C	D	E	F
HMI	H2	H3	H4	H5	H5	H6

	Crane Duty Classification					
安全工作周期 SWP(h)	400	800	1,600	3,200	6,300	12,500
持续率 Duty %ED	25	30	40	50	60	60
启动次数 Starts (s/h)	150	180	240	300	360	360
运行时间 Run Time(h)	3,200	6,300	12,500	25,000	50,000	100,000
启动次数 Starts	480,000	1,134,000	3,000,000	7,500,000	18,000,000	42,000,000
超载次数 Overloads	1,000	1,000	1,000	1,000	1,000	1,000

Energy&steel saving



Power saving ↓ 58%



Steel saving ↓ 45%

EUROPEAN TYPE WIRE ROPE HOIST

SWL(t)
0.5t-80t

HOL(m)
0m-60m

Work Duty
M3-M6



★ Disc brake, 500,000.00 times working life

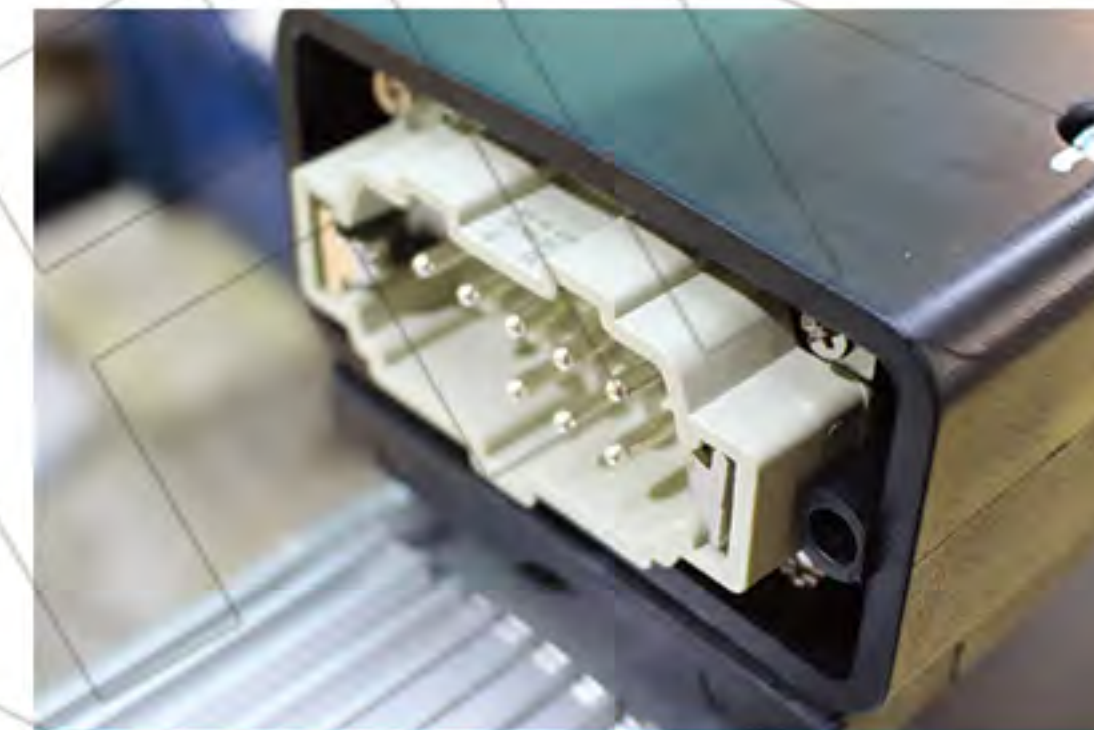


★ Safety monitoring system



■ MAIN FEATURES

- Low headroom
- Smart driving, higher efficiency
- Stepless traveling control
- Hardened gear, low noise design
- IP55/ F or H Insulation
- Heavy duty motor, 60%ED rating
- Overheating, overloading protect
- Electromagnetic disk brake, full sealing
- Maintenance free
- Dual speeds for hoisting



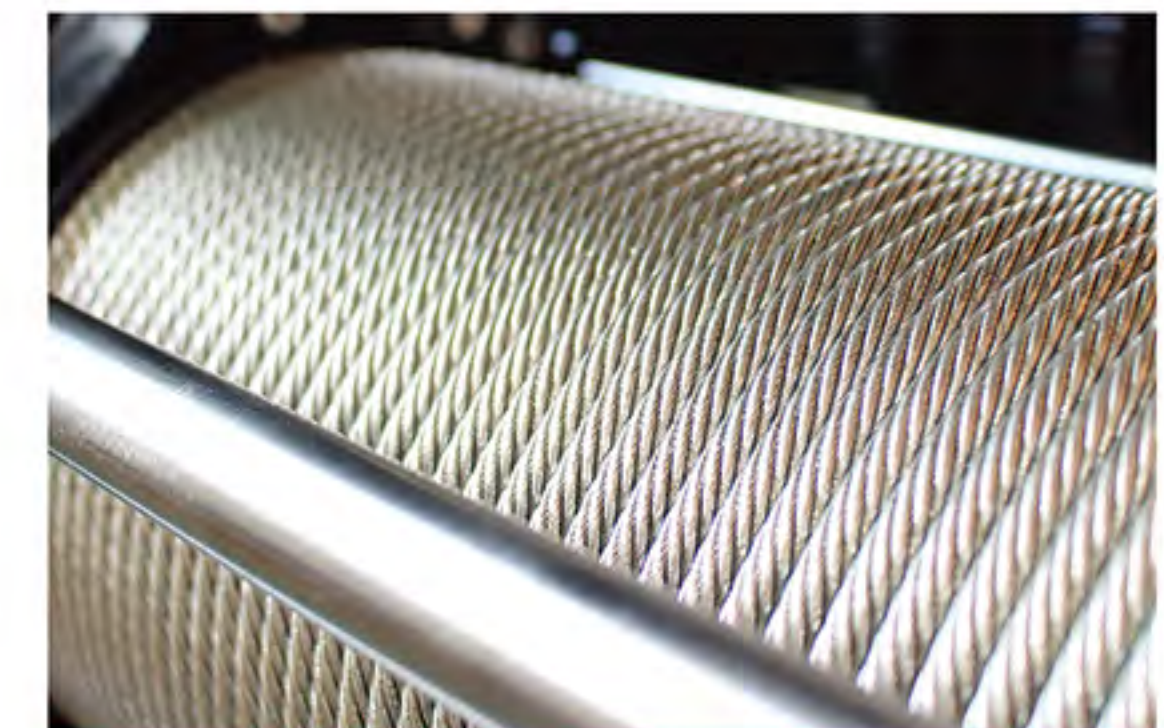
★ Aviation plug, easy connection



★ 3 in 1 gear motor for travelling



★ Hardened gear, free maintenance design



★ 2160N/mm2 Heavy duty galvanized wire rope

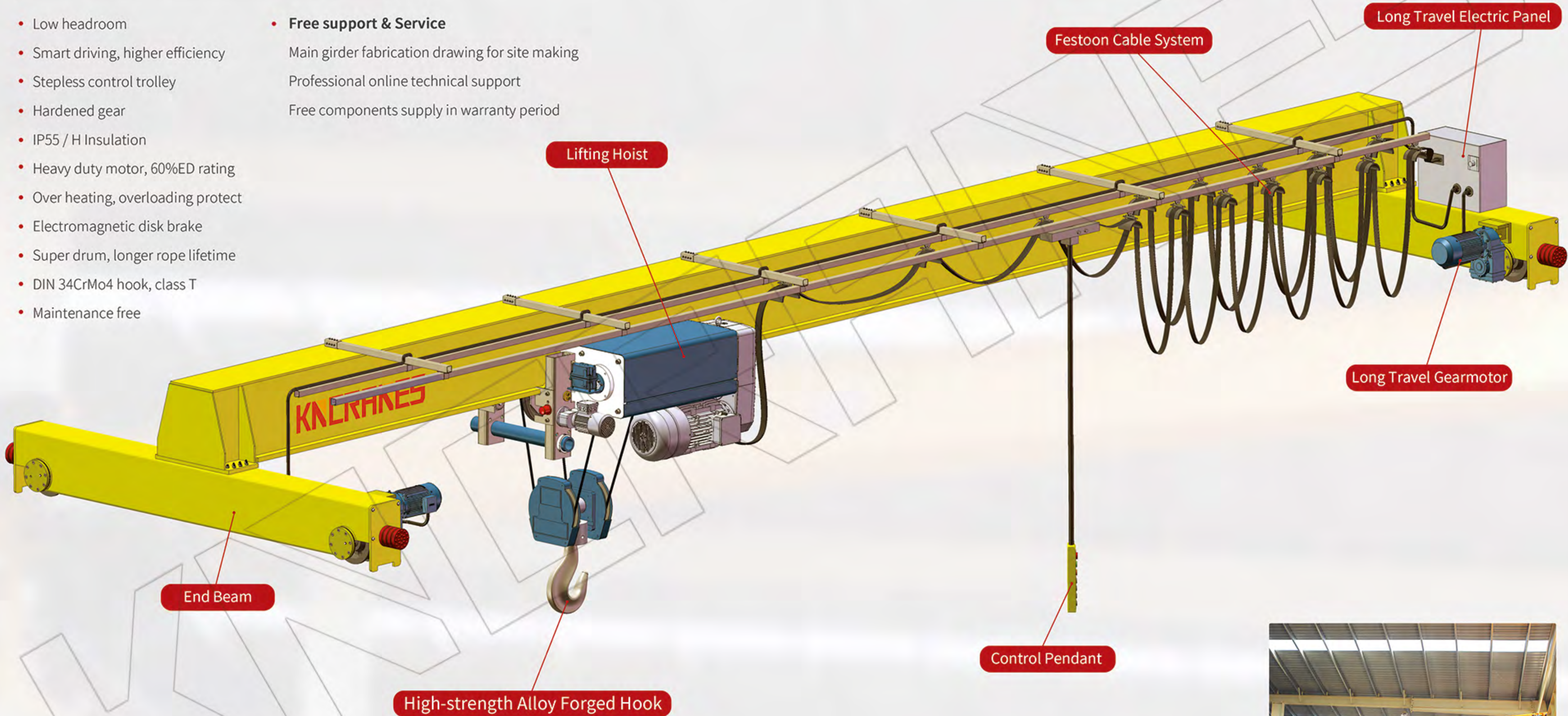
Single Girder Hoist Overhead Crane

Standard Parameter Scope

SWL(t)	HOL(m)	Work Duty
0.5t - 20t	Max. 90m	M3-M6

- Low headroom
- Smart driving, higher efficiency
- Stepless control trolley
- Hardened gear
- IP55 / H Insulation
- Heavy duty motor, 60%ED rating
- Over heating, overloading protect
- Electromagnetic disk brake
- Super drum, longer rope lifetime
- DIN 34CrMo4 hook, class T
- Maintenance free

- **Free support & Service**
 - Main girder fabrication drawing for site making
 - Professional online technical support
 - Free components supply in warranty period

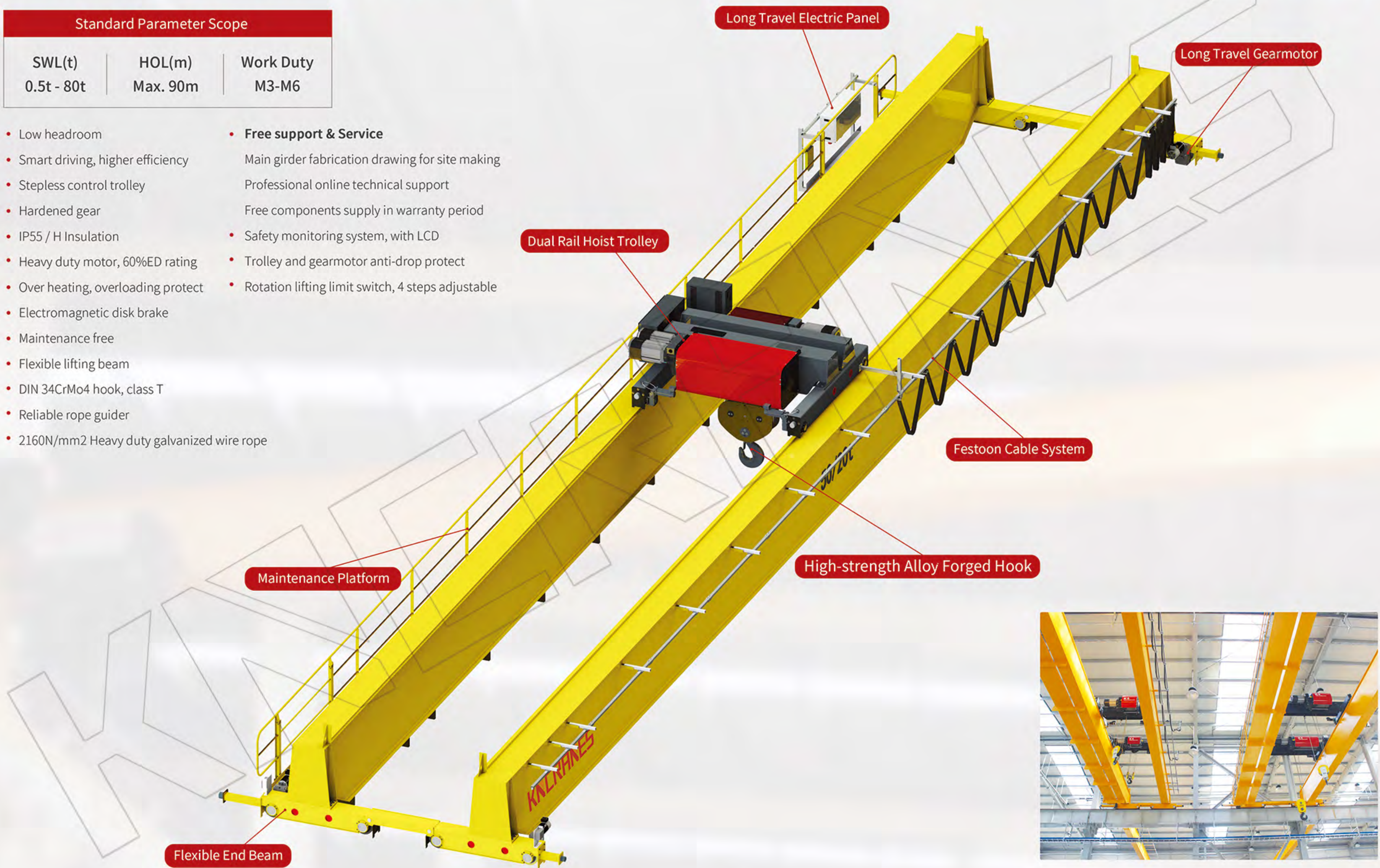


Double Girder Hoist Overhead Crane

Standard Parameter Scope

SWL(t)	HOL(m)	Work Duty
0.5t - 80t	Max. 90m	M3-M6

- Low headroom
 - Smart driving, higher efficiency
 - Stepless control trolley
 - Hardened gear
 - IP55 / H Insulation
 - Heavy duty motor, 60%ED rating
 - Over heating, overloading protect
 - Electromagnetic disk brake
 - Maintenance free
 - Flexible lifting beam
 - DIN 34CrMo4 hook, class T
 - Reliable rope guider
 - 2160N/mm² Heavy duty galvanized wire rope
- **Free support & Service**
 - Main girder fabrication drawing for site making
 - Professional online technical support
 - Free components supply in warranty period
 - Safety monitoring system, with LCD
 - Trolley and gearmotor anti-drop protect
 - Rotation lifting limit switch, 4 steps adjustable



European Hoist Single Girder Gantry Crane



SWL(t)	Span(m)	HOL(m)	Class
1t-20t	5m-35m	3m-40m	M4-M6

■ MAIN FEATURES

- Stepless control
- Hardened gear
- Motor protection class IP55
- Heavy duty motor, 60%ED rating
- Electromagnetic disk brake, dust proof
- No oil leakage, self-adjustable brake
- Heavy duty galvanized wire rope
- Outperforming reliability designing
- Smaller size, lighter wheel load
- Control mode: pendant/remote/cabin
- Maintenance free

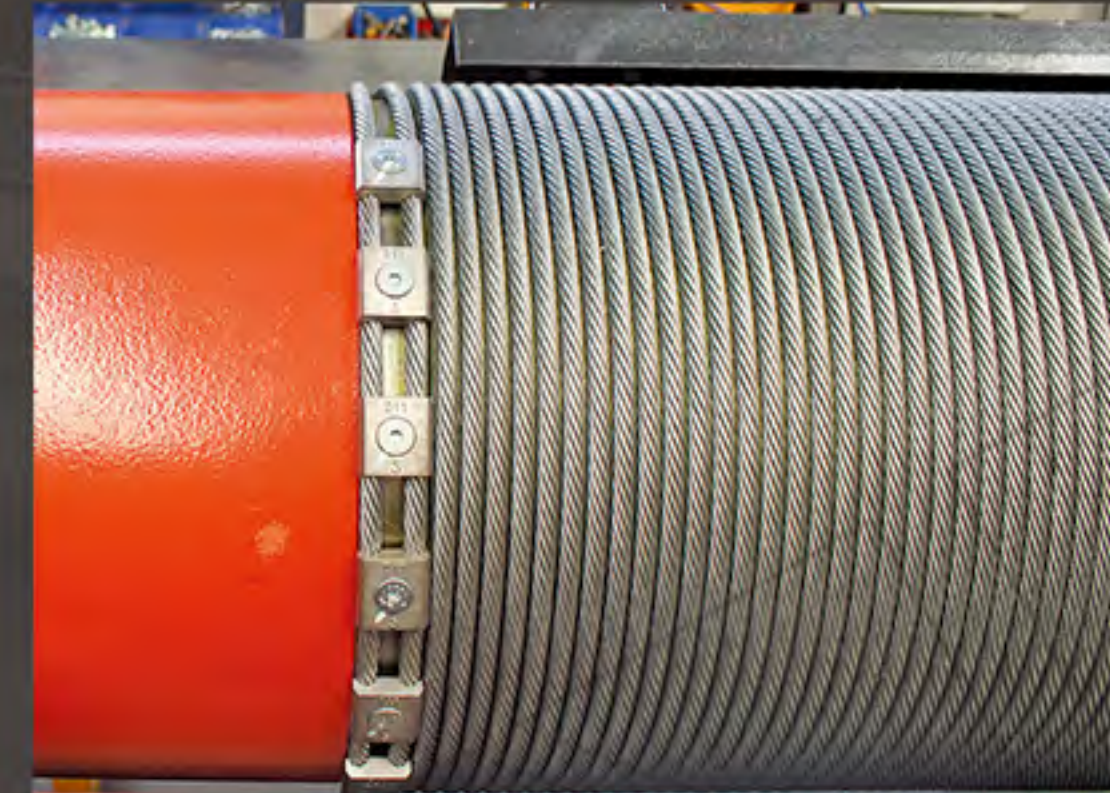
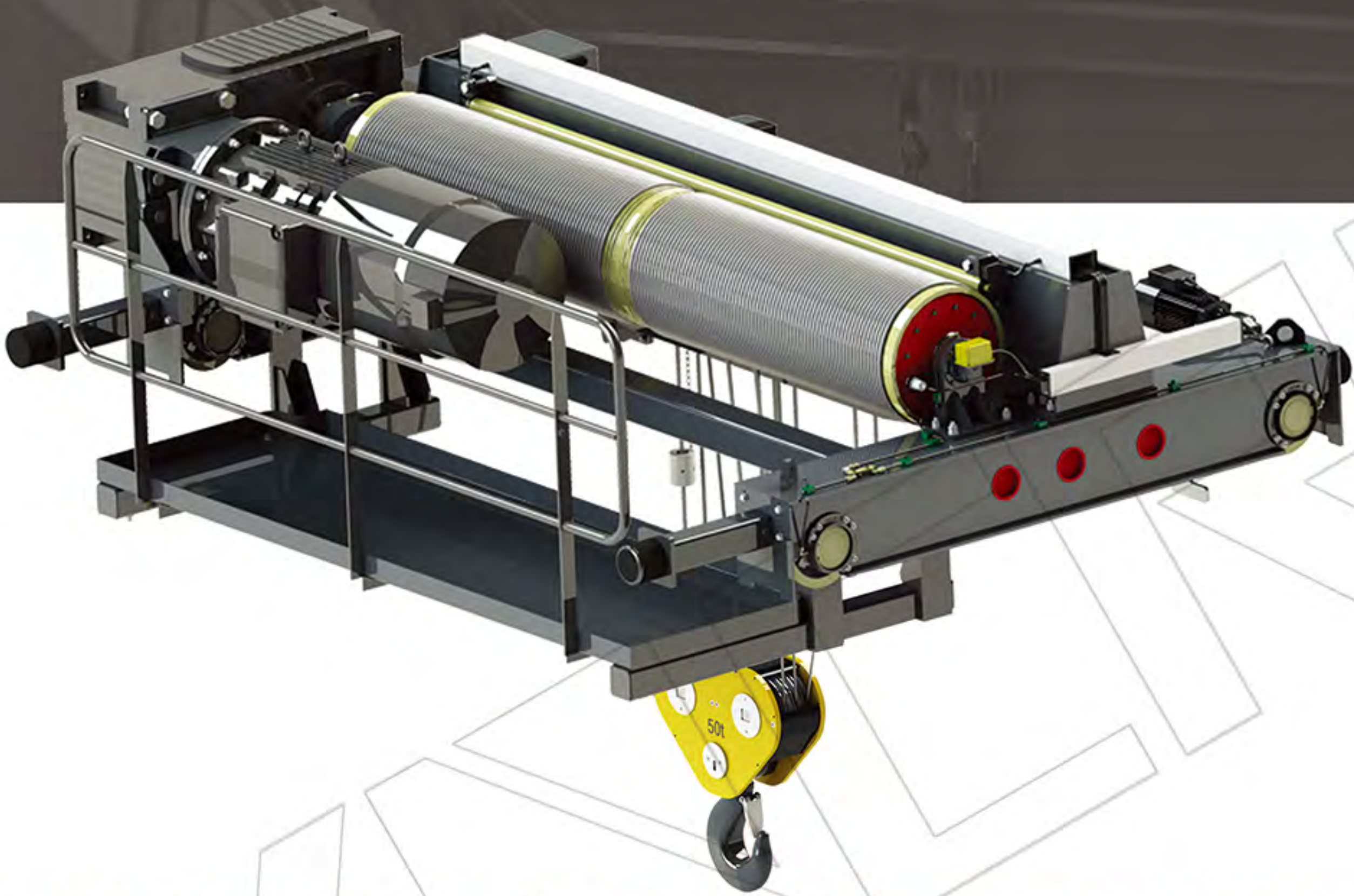


HEAVY DUTY OPEN WINCH TROLLEY

SWL(t)
5t-500t

HOL(m)
Max.160m

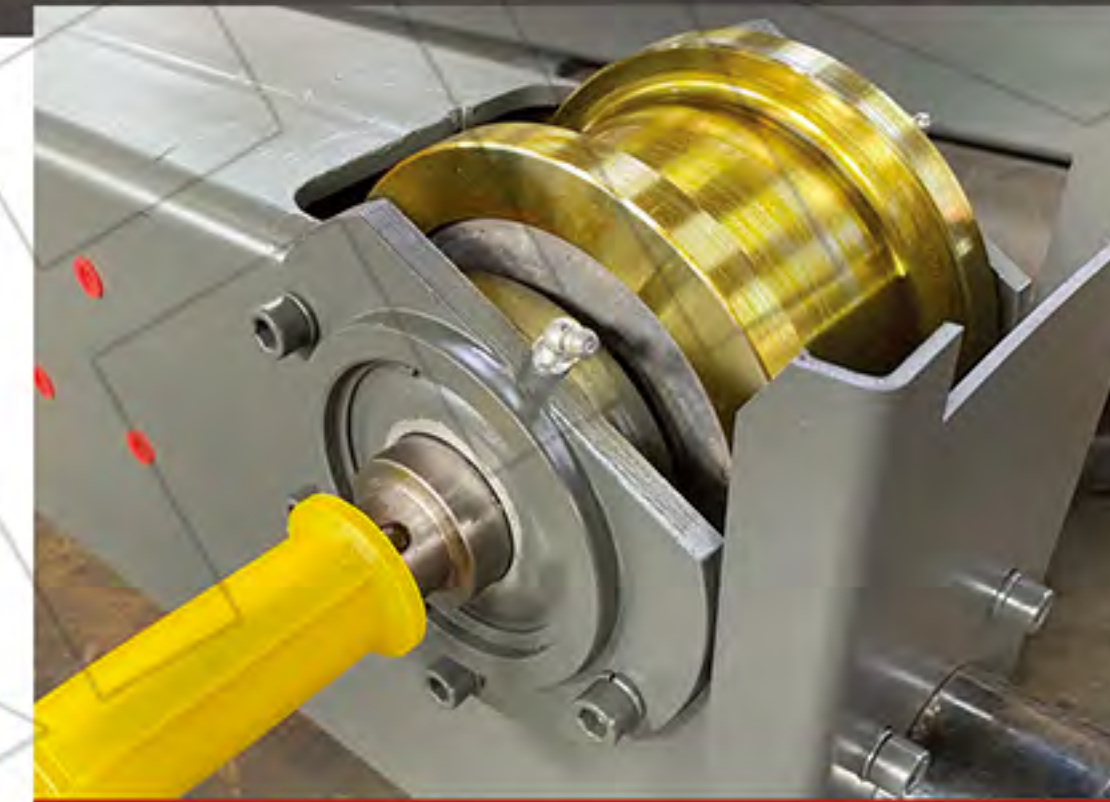
Work Duty
M3-M8



★ High grade steel wire rope



★ Stepless speed control



★ European wheel 42CrMo



★ Hardened gear reducer



★ Heavy duty motor



★ Heavy duty plug set, IP55 protection, easy connection



Heavy Duty Overhead Crane

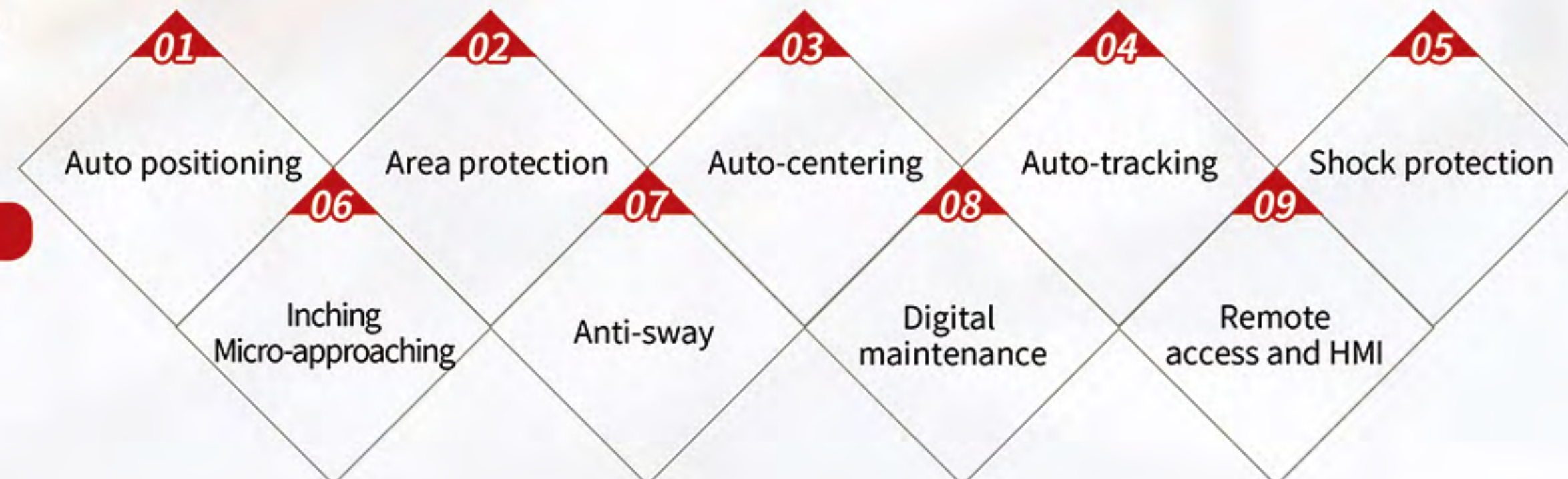
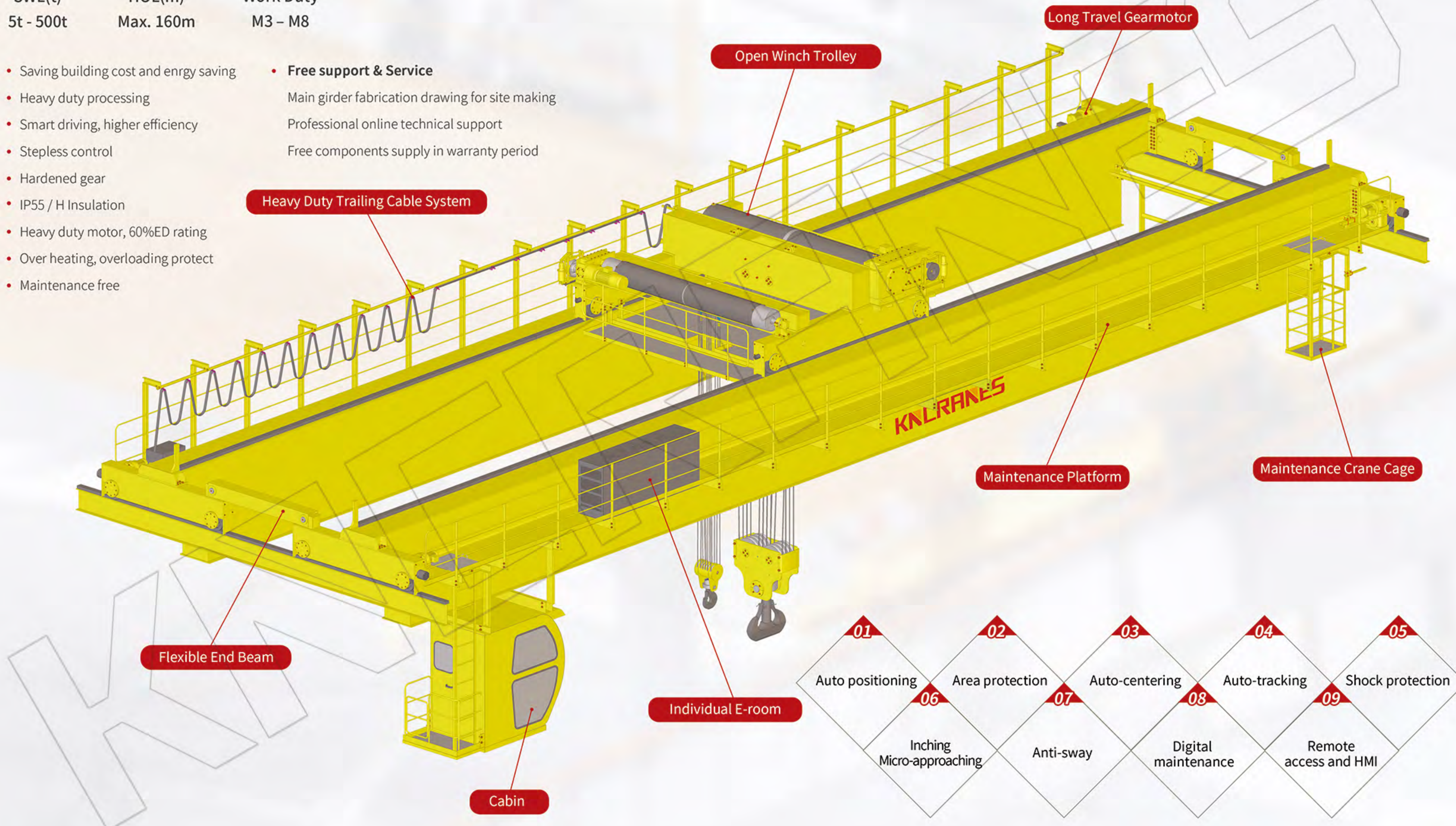
Standard Parameter Scope

SWL(t)	HOL(m)	Work Duty
5t - 500t	Max. 160m	M3 - M8

- Saving building cost and energy saving
- Heavy duty processing
- Smart driving, higher efficiency
- Stepless control
- Hardened gear
- IP55 / H Insulation
- Heavy duty motor, 60%ED rating
- Over heating, overloading protect
- Maintenance free

- **Free support & Service**
- Main girder fabrication drawing for site making
- Professional online technical support
- Free components supply in warranty period

Heavy Duty Trailing Cable System

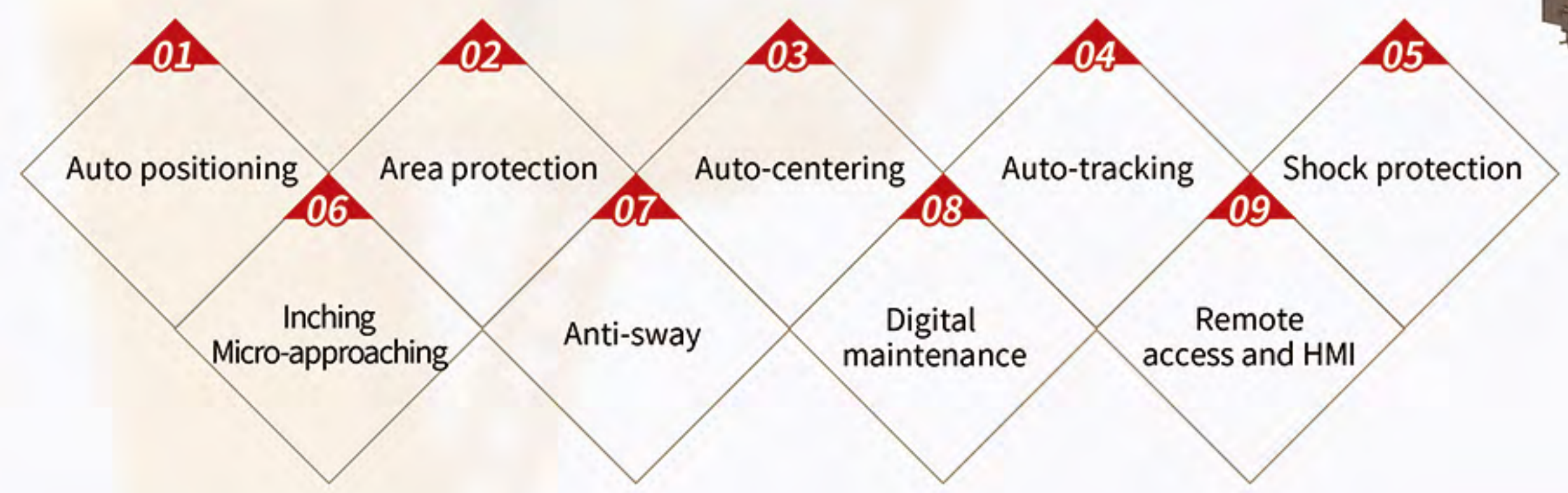
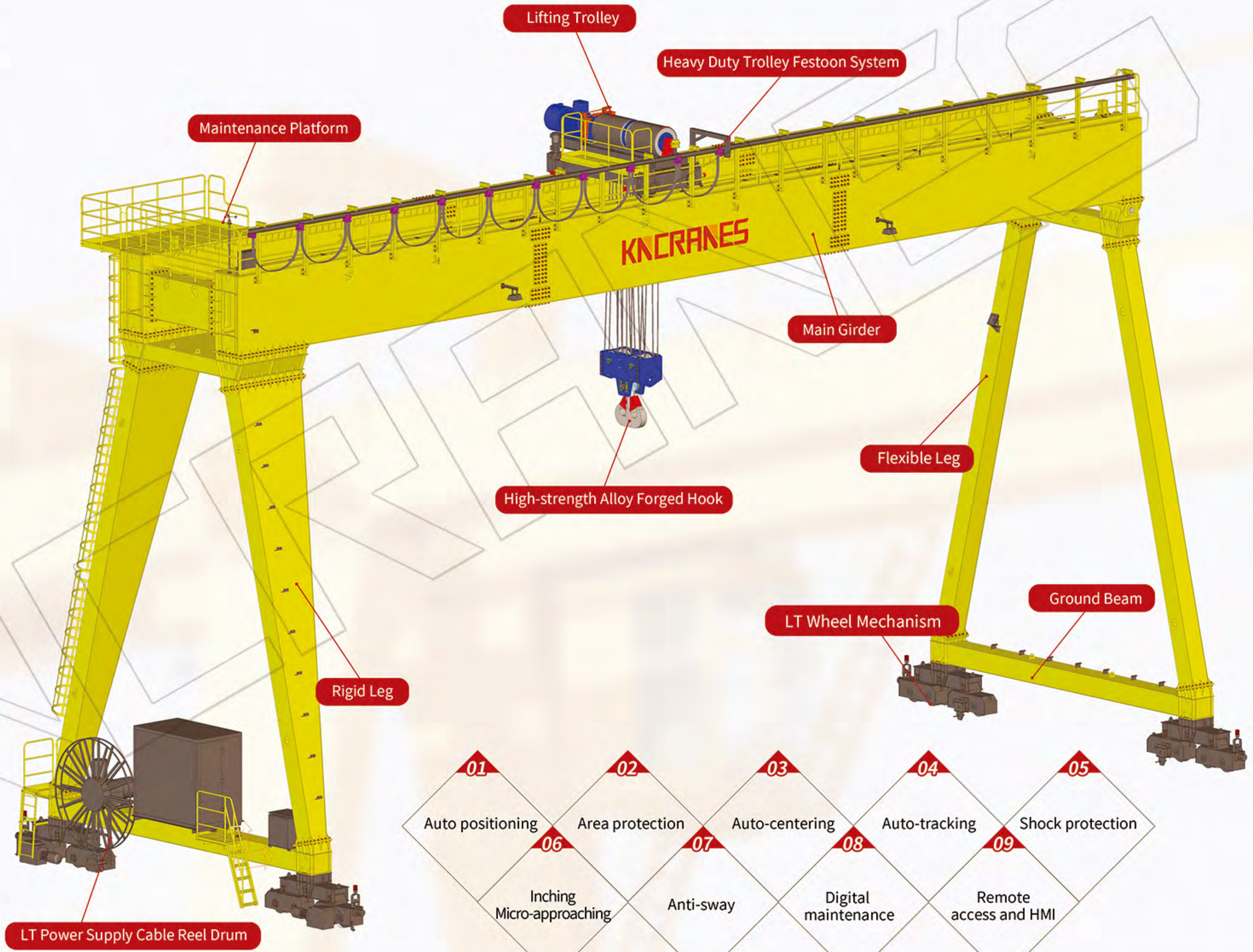


Heavy Duty Gantry Crane

Standard Parameter Scope

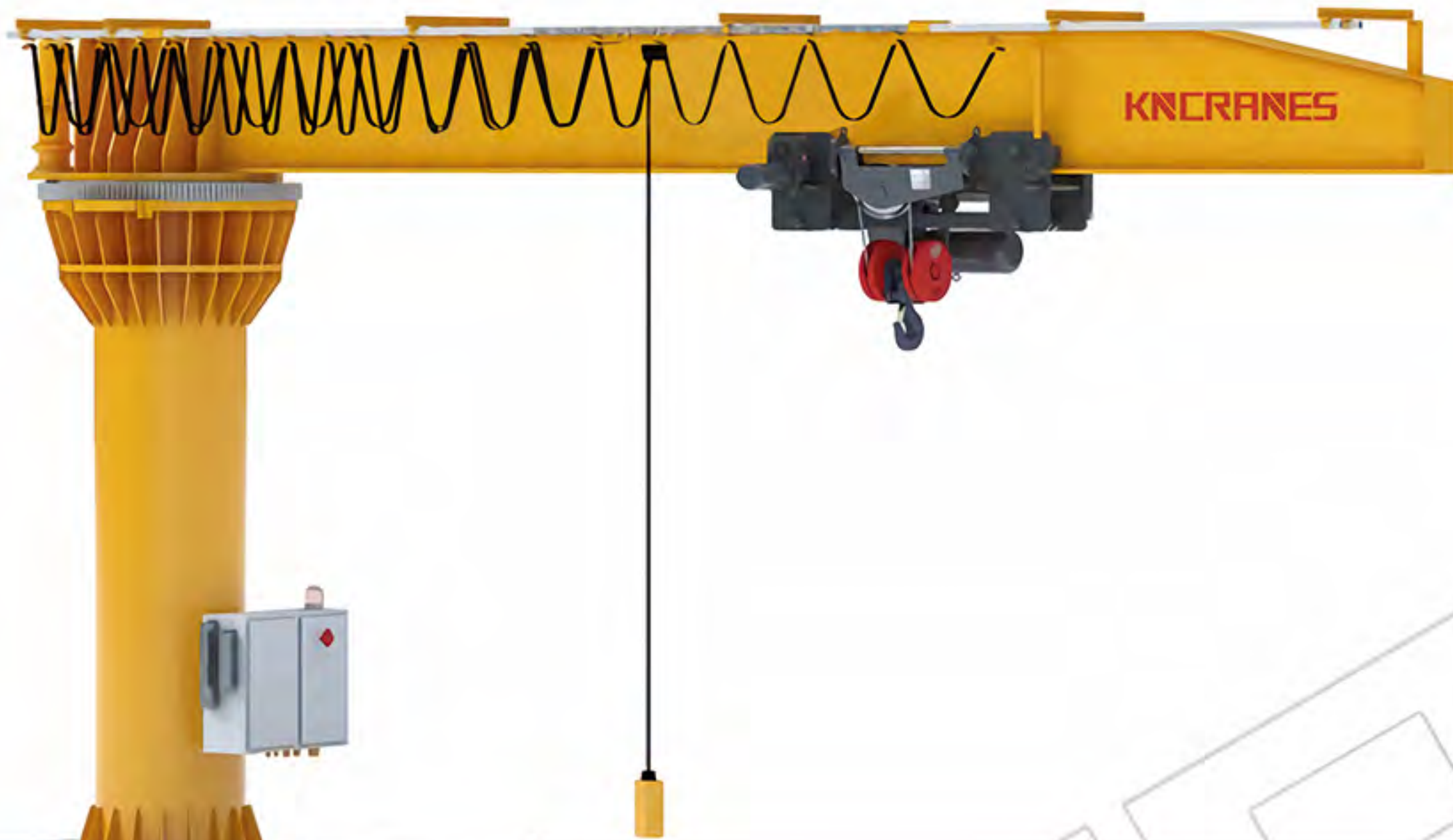
SWL(t)	HOL(m)	Work Duty
5t-500t	3m-60m	M3-M8

- Saving building cost and enrgy saving
- Heavy duty processing
- Smart driving, higher efficiency
- Stepless control
- Hardened gear
- IP55 / H Insulation
- Heavy duty motor, 60%ED rating
- Over heating, overloading protect
- Maintenance free
- **Free support & Service**
Main girder fabrication drawing for site making
Professional online technical support
Free components supply in warranty period



Jib crane

Semi gantry crane



SWL(t)	HOL(m)	Class
0.5t-20t	0m-90m	M4-M6



SWL(t)	HOL(m)	Class
0.5t-80t	0m-90m	M4-M6

MAIN FEATURES



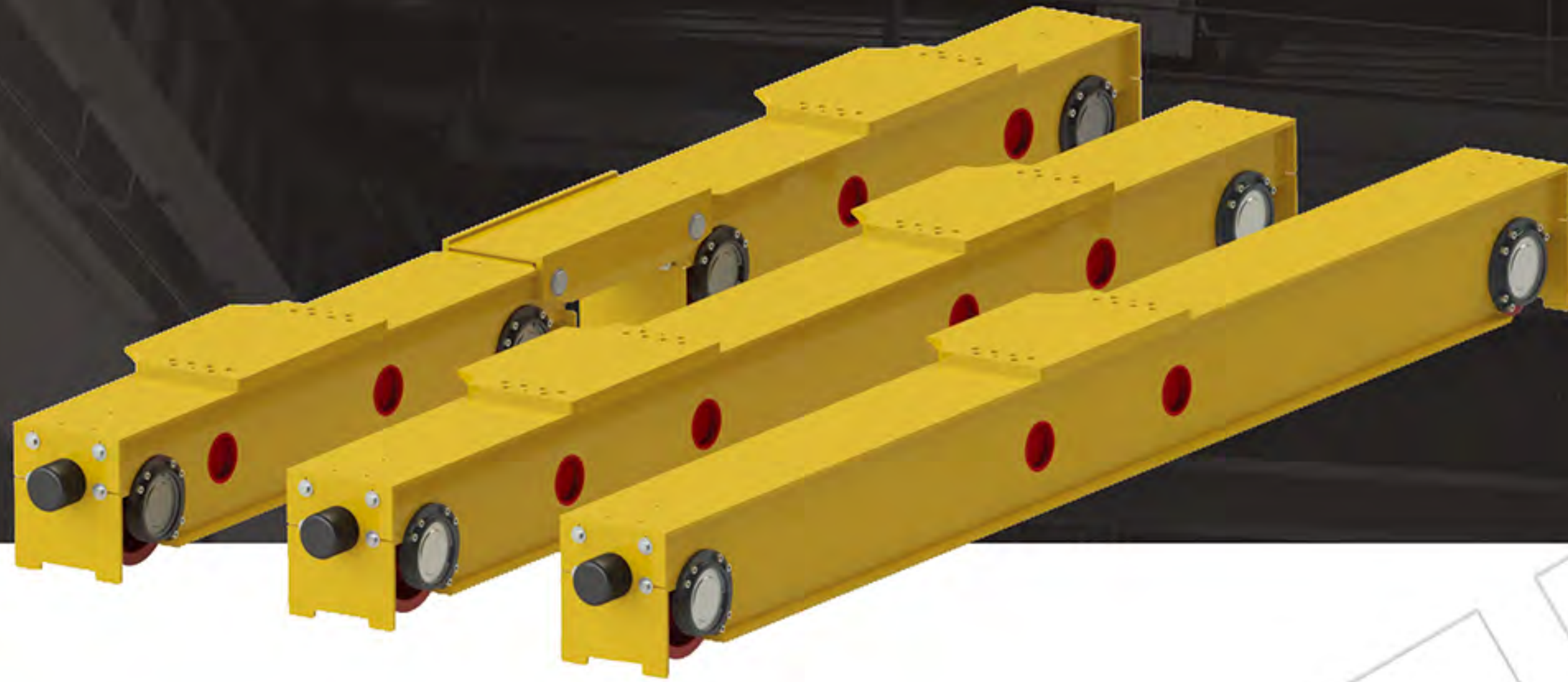
- Stepless control
- Harden gear
- Protection class IP55
- Heavy duty motor, 60%ED rating
- Electromagnetic disk brake,dust proof
- No oil leakage,self-adjustable brake
- Heavy duty galvanized wire rope
- Outperforming reliability designing
- Small size,lighter wheel load

MAIN FEATURES



- Stepless control
- Harden gear
- Protection class IP55
- Heavy duty motor, 60%ED rating
- Electromagnetic disk brake,dust proof
- No oil leakage,self-adjustable brake
- Heavy duty galvanized wire rope
- Outperforming reliability designing
- Smaller size,lighter wheel load

Integrated End Carriage



Heavy load wheel block
Central lubrication



Adjustable vertical inclination and
horizontal divergence

MAIN FEATURES

Integrated end carriage

Reduce wheel pressure

Modular end carriage, direct driving



Spline shaft, direct driving

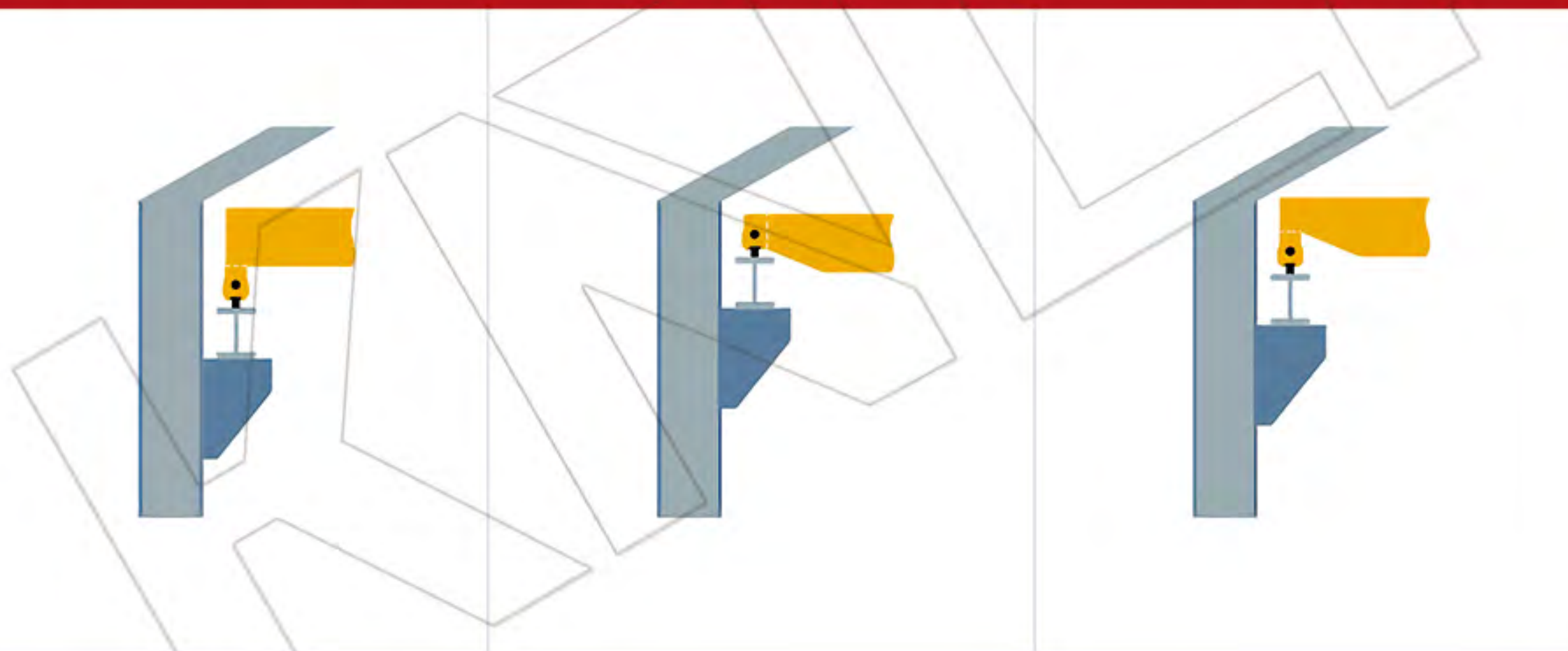


Roller guider for travelling

Standard connection

Side connection

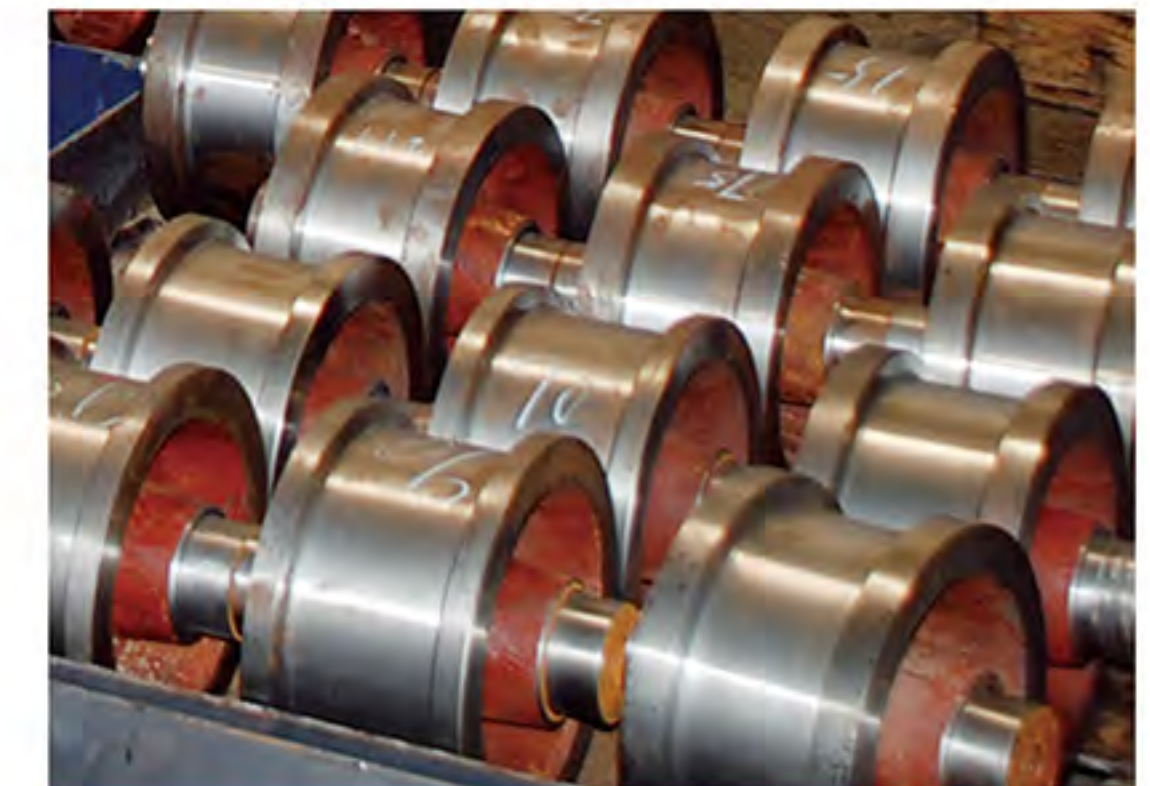
Medium connection



Module joint designing, Fitting with smallest building clearance

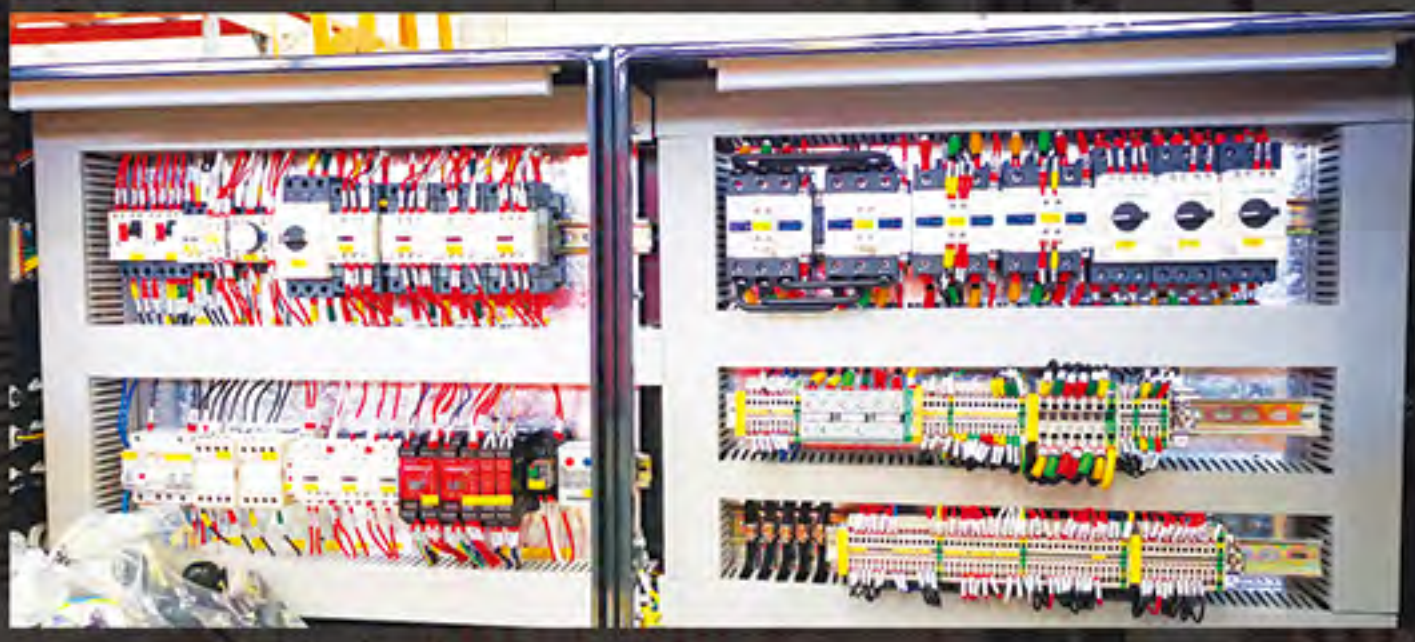


Spray treatment, abrasion
proof, anti-corrosion



Casting wheel DIN GGG70

Control System



- **Crane panel**
- IEC standard
- The control panels are finished to anti-corrosion. IP55
- Multiple functions customized



- **Intelligent safety monitoring system**

Real time monitoring over 30 safety items

Hoist safe working Period counter (SWP%)

Lifting running time counter

Overloading counter

Motor starts counter

Overheating protection

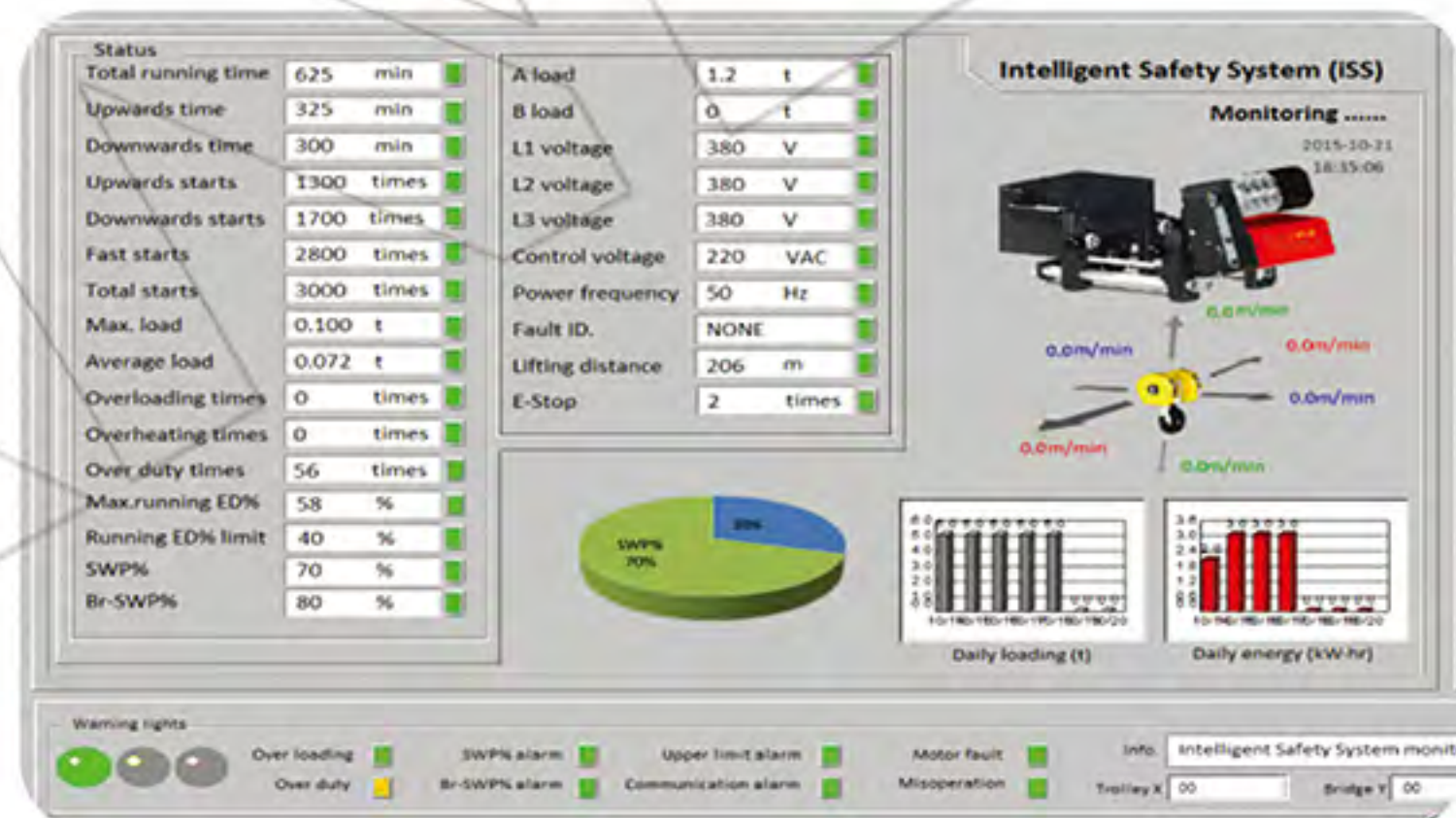
Overload protection

Ethernet/4G remote access

Brake-wear supervision



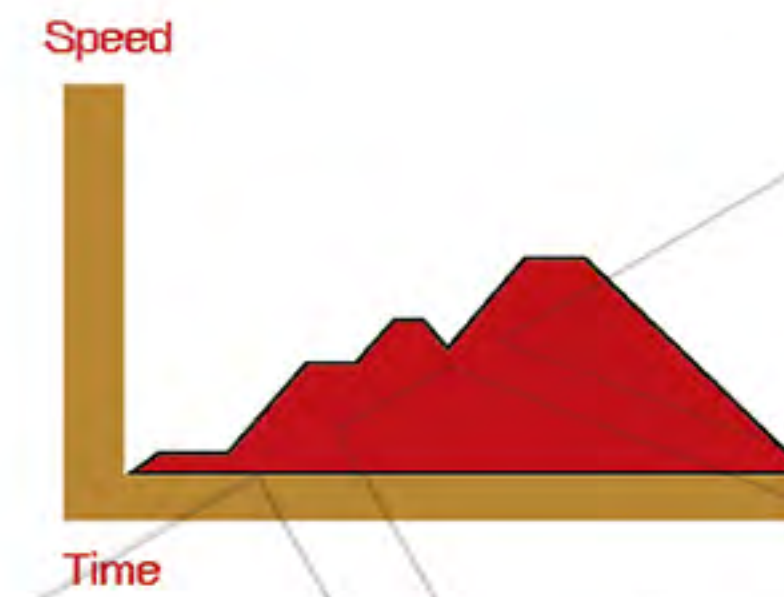
Touch screen HMI terminal



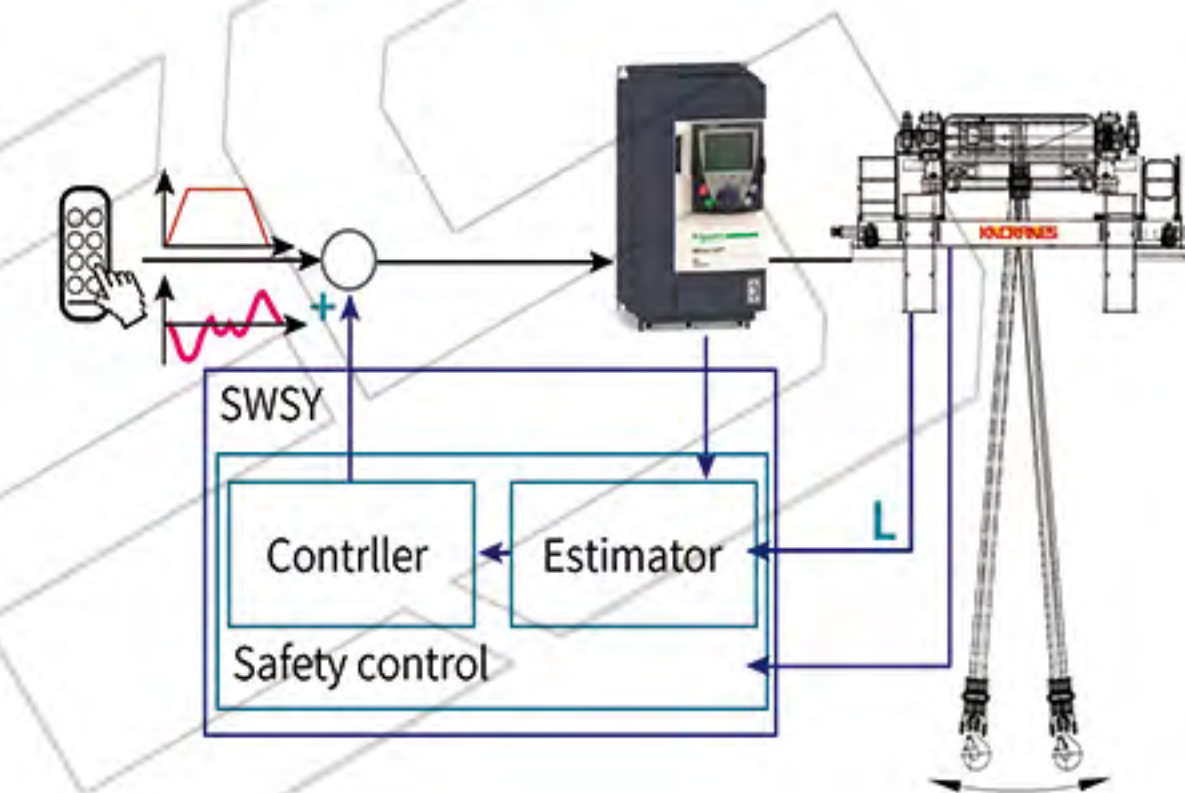
- **Inverter**

Smoothly starting, moving, stop, less of hook swaying

Higher transmission efficiency, lower power



- **E Anti-sway system/HMI/Remote access via ethernet**

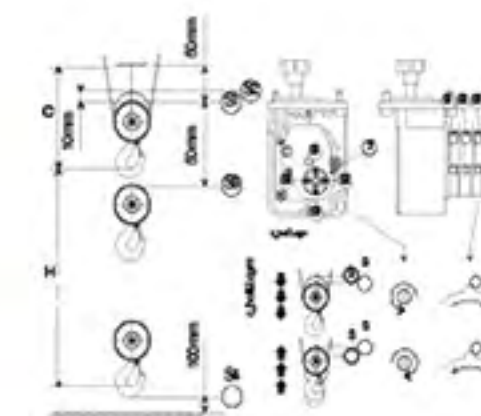


- **Limit switch**

4 fully adjustable switching points

Phase fault protection

Lower, slow-down, upper, top



- **Remote control**

Protection class IP65



- **Trolley fastoon**

Reliable power supply Long life



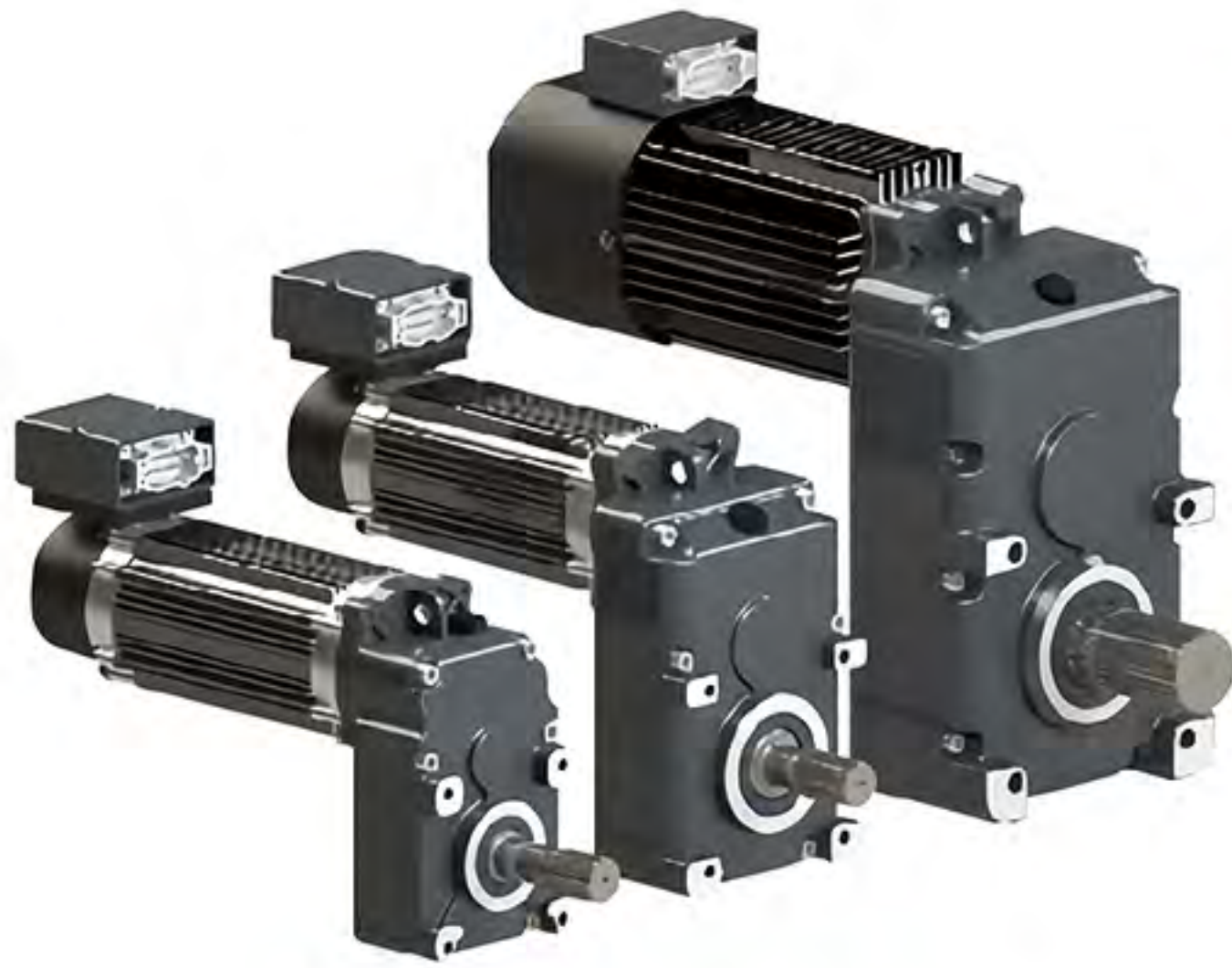
- **Cabin control**

Aviation design, large sight view



3 in 1 Gearmotor

Main Parts



IP55 60%ED /H Insulation

FEATURES

- Stepless travelling
- Squirrel-cage, synchronous speed 3000 rpm
- Heavy duty 60% ED rating, IP55/H insulation
- Electromagnetic disc brake
- Totally enclosed compact gearbox
- Silent running with hardened gear wheels
- Semi-fluid grease lubrication for service life

IP55 60%ED /H Insulation

Motor + brake + gearbox three integrated design, rational use of space, compact structure

Disc Brake



Travelling Motor



Hardened Gearbox



3 in 1 Gearmotor



Lifting motor

- Asynchronous motors synchronous
- Speed 3000/ 500pm (50HZ)
- Heavy duty 60% ED rating
- Over heating /IP55 /H insulation
- Optimum cooling / Cut off(170°C)



Lifting gearbox

- Silent running
- Hardened gear
- Optimized transimission, higher efficiency
- Totally enclosed, compact
- Semi-luid grease, service life



Lifting brake

- Electromagnetic disc brake
- DC power supply
- No adjusting for brake lining
- Dust proof
- Heavy duty
- 500,000.00 Times working life



Hook

- DIN standard forging hook optimized size
- Small in size
- High strength
- More effective lifting height



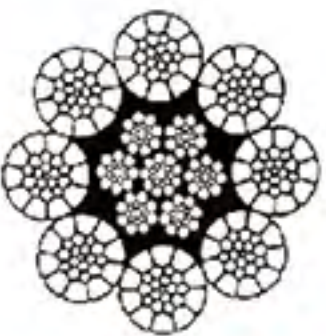
Chain type rope guide

- Nylon material, higher ductility, longer guider life
- Fitting with drum range
- Even no wearing, longer drum and rope life
- Easier assembling



High grade steel wire rope

- High stress 2160 N/mm²
- Galvanized, maintenance free
- Plane contacting wire, wearable



Installation Site



Installation Site

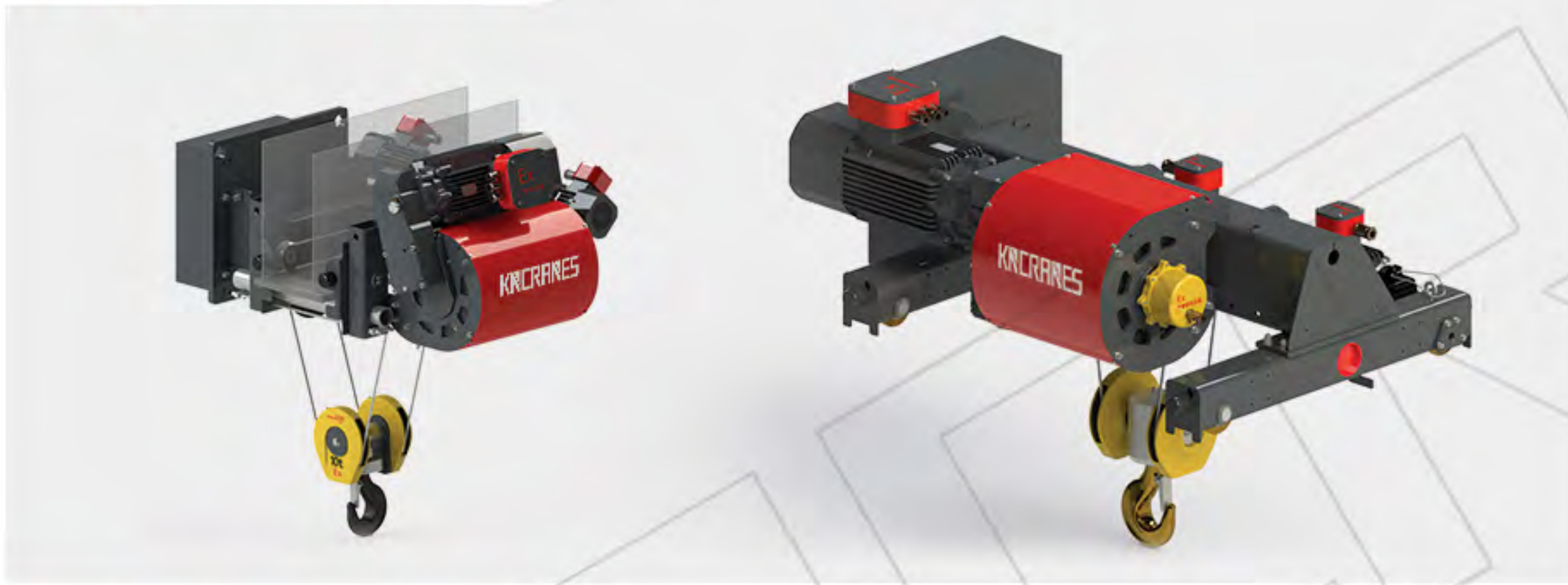


Special Hoist

- Dust-Proof Hoist



- Explosion-Proof Hoist



- Metallurgical Hoist



Customer Visiting



Auxiliary Equipment



● Round Magnet



● Rotating Magnet Spreader



● C-Type Hook



● Coil Lifting Tong



● Telescopic Electromagnetic Spreader



● Billets Handling Clamp



● Coil Lifter



● Mechanical Grab



● Hydraulic Grab



● Ladle Hook



● Coil Transfer Cart

Auxiliary Equipment