

KENANCRANES

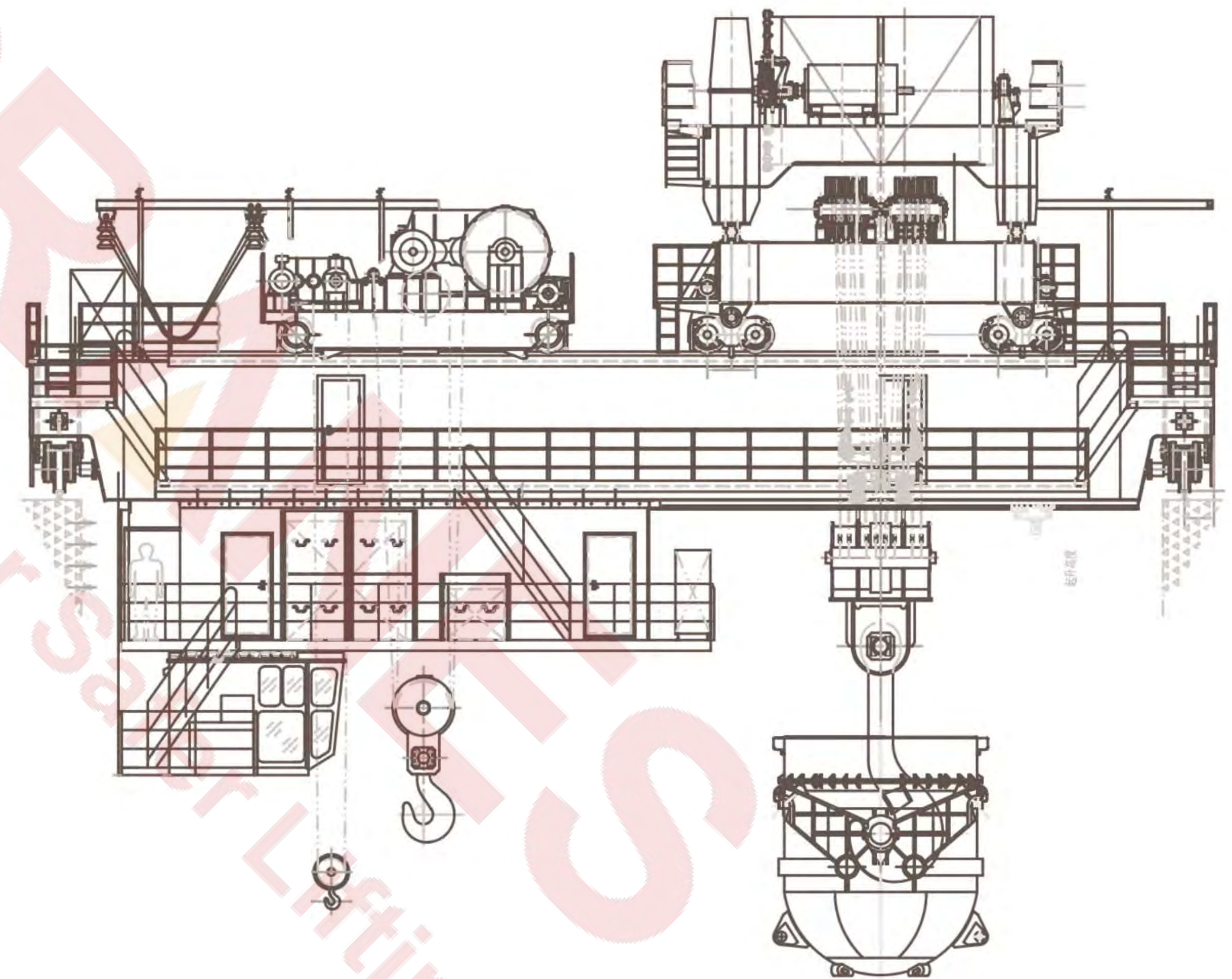
Trust in Kino for Safer Lifting

STEEL MAKING CRANE EQUIPMENT MANUAL

METALLURGY

LEADING CRANE MANUFACTURER

Focus On Crane Technology Development



KENANCRANES
Trust in Kino for Safer Lifting

METALLURGY CRANE MANUFACTURER

Focus On Crane Technology Development

K I N O C R A N E S

地址：河南省新乡市红旗区星海中心730室

Address: No. 730, Xinghai Center, Hongqi District, Xinxiang, Henan, China

电话 Tel: 0086-373-3809044

传真 Fax: 0086-373-3809044

邮箱 Email: inquire@kinocranes.com

网址 Web: www.kinocranes.com

COMPANY PROFILE



KENANCRANES

Trust in Kino for Safer Lifting

FOCUS ON CRANE TECHNOLOGY DEVELOPMENT

Total capital 220 million RMB. The factory area is about 280 acres.

Kinocranes is a modern manufacturing enterprise that keeps focus on the cutting-edge technology and developments of European style cranes.

It focus on customized, special propose and more intelligent cranes' research and development and overseas market. Through more detailed division of labor and precise product positioning, we will provide customers with more professional and convenient services.

We have more than 1200 employees, among which there are more than 180 engineers and technicians. The factory area is about 280 acres. The registered capital is 108.80 million RMB and total capital 220 million RMB. The 210-plus sets of advanced manufacturing and testing equipments enable us to make high quality products.

Our company's main products are: European Standard and China standard bridge cranes, gantry cranes, rail mounted gantry crane for container handling, processing crane such as cranes for foundry, melt metal and explosion proof.

Based on Konecrane's technique, our products have advantages of slim size, light weight, excellent free maintenance performance, continuing working efficiency, advanced configuration, galvanized steel rope, disc brake for lifting safety, hardened reducer, PLC lifting limit switch etc. they are innovative products in China crane industry. The products ranges are: China standard and European standard overhead crane, gantry crane and light scale crane equipments. The core parts of European type crane use Konecrane group-SWF company. Structural parts are fabricated according to Konecrane's drawing and technological standard. The whole crane performance reach international advanced level.



» METALLURGICAL HOIST

- ★Double brake system
- ★Forward and reverse protection
- ★Double independent wire rope design(5-10T)
- ★Metallurgical wire rope
- ★Overspeed protection
- ★Double lifting limit(Gravity+Rotary)
- ★Pulley and hoist insulation cover
- ★Overload limit switch
- ★Motor protection and insulation: IP55/H
- ★Operating should keep away from heat sources



安全性能 Safety Performance

» SAFETY MONITOR SYSTEM



- ★Lifting running time counter
- ★Overloading count
- ★Motor starts count
- ★Overheating protection
- ★Overload protection
- ★Brake-ware supervision
- ★Ethernet/4G remote access

» DOUBLE GIRDER HOIST TROLLEY



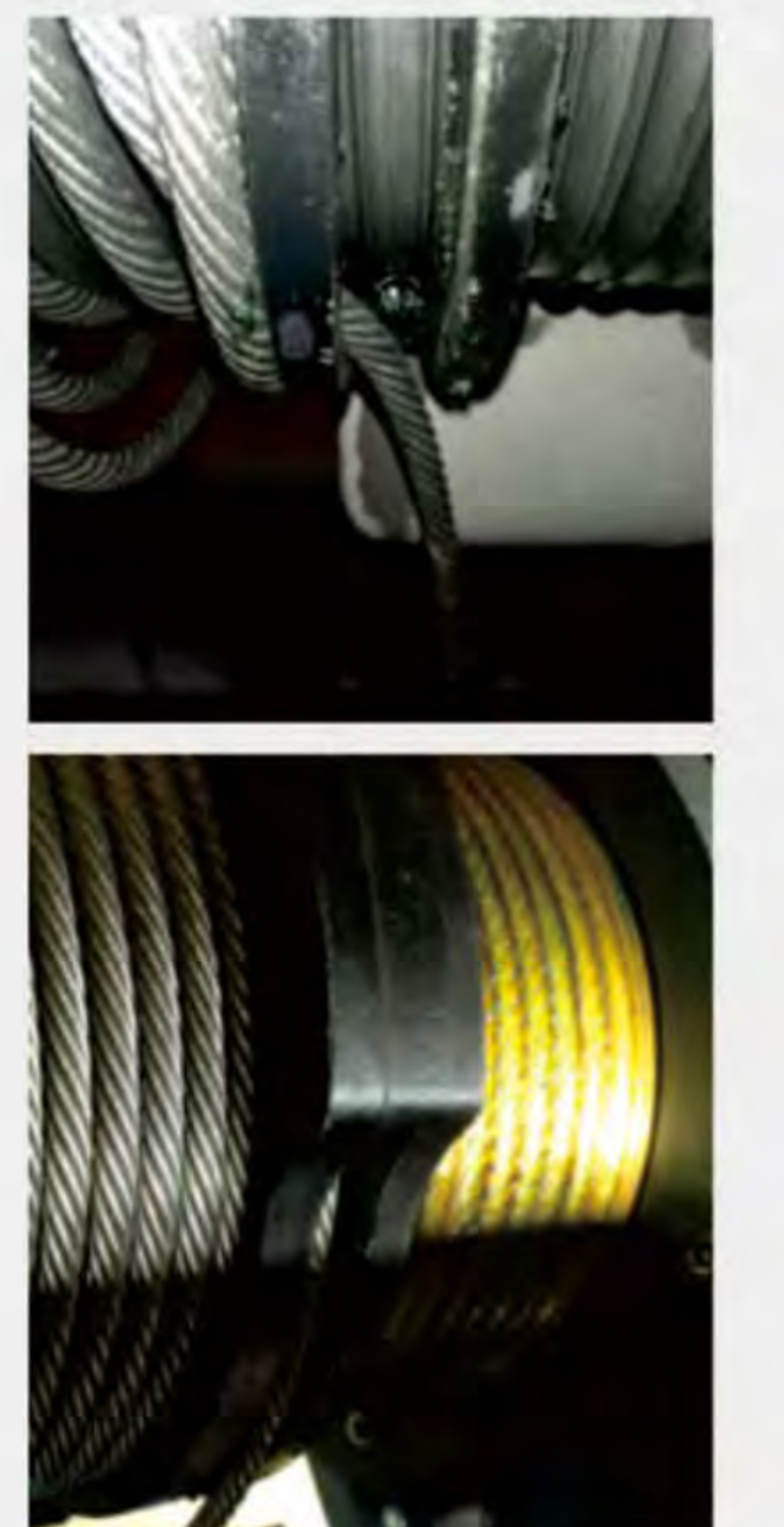
- ★VFD Trolley
- ★Safety monitor devices
- ★IP55 electric panel
- ★Hardened gear reducer
- ★Flexible end carriages
- ★Phase loss and phase sequence protection
- ★Fall down protection
- ★Anti-loosening rope protection
- ★Impact protection
- ★Anti-sway function
- ★Inching and micro movement

» ROPE GUIDER



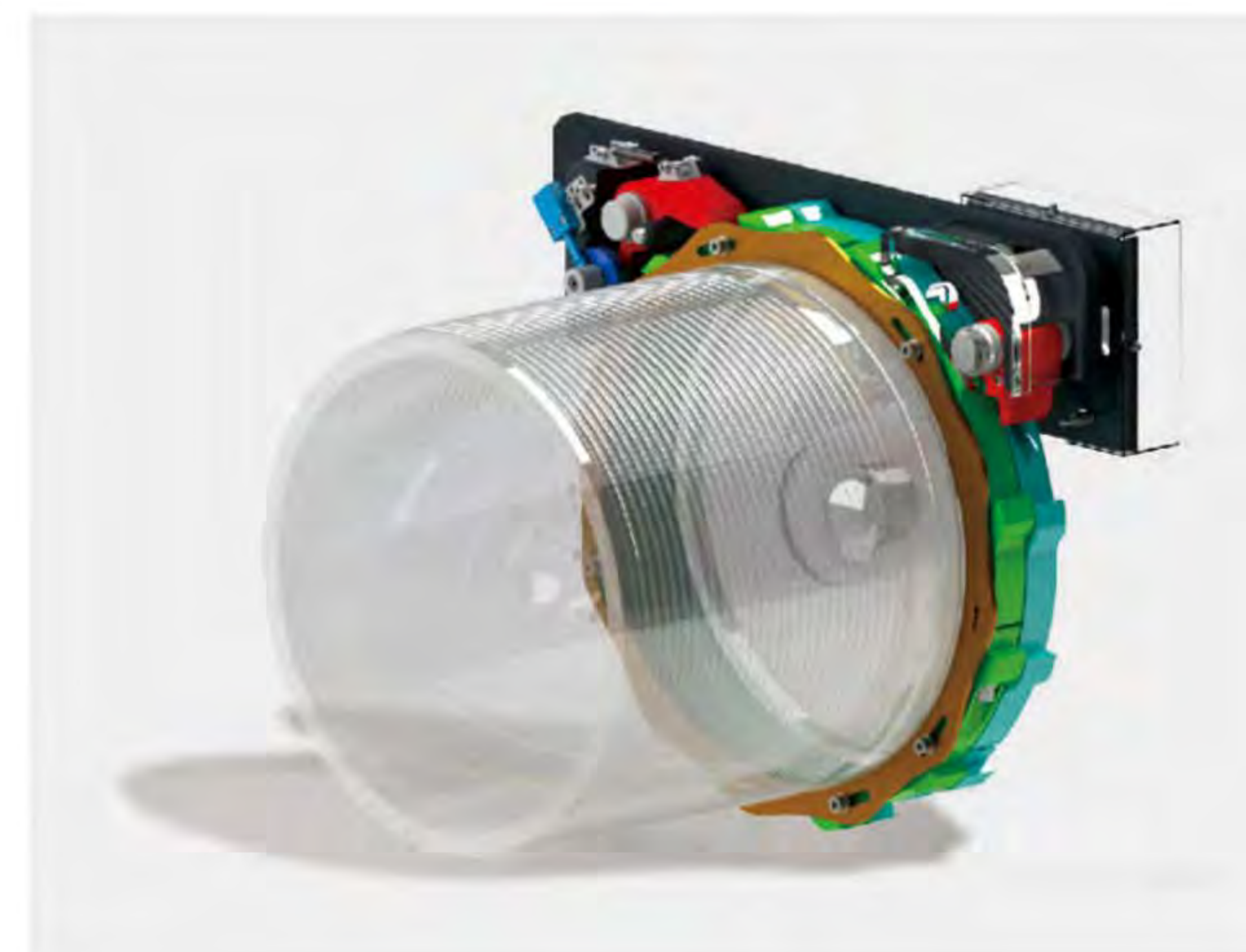
Wire Rope Anti-inclining Protection
★ Stop lifting in case the angle of tilting over preset data.

Loose Rope Protection
★ Reliable rope guider .



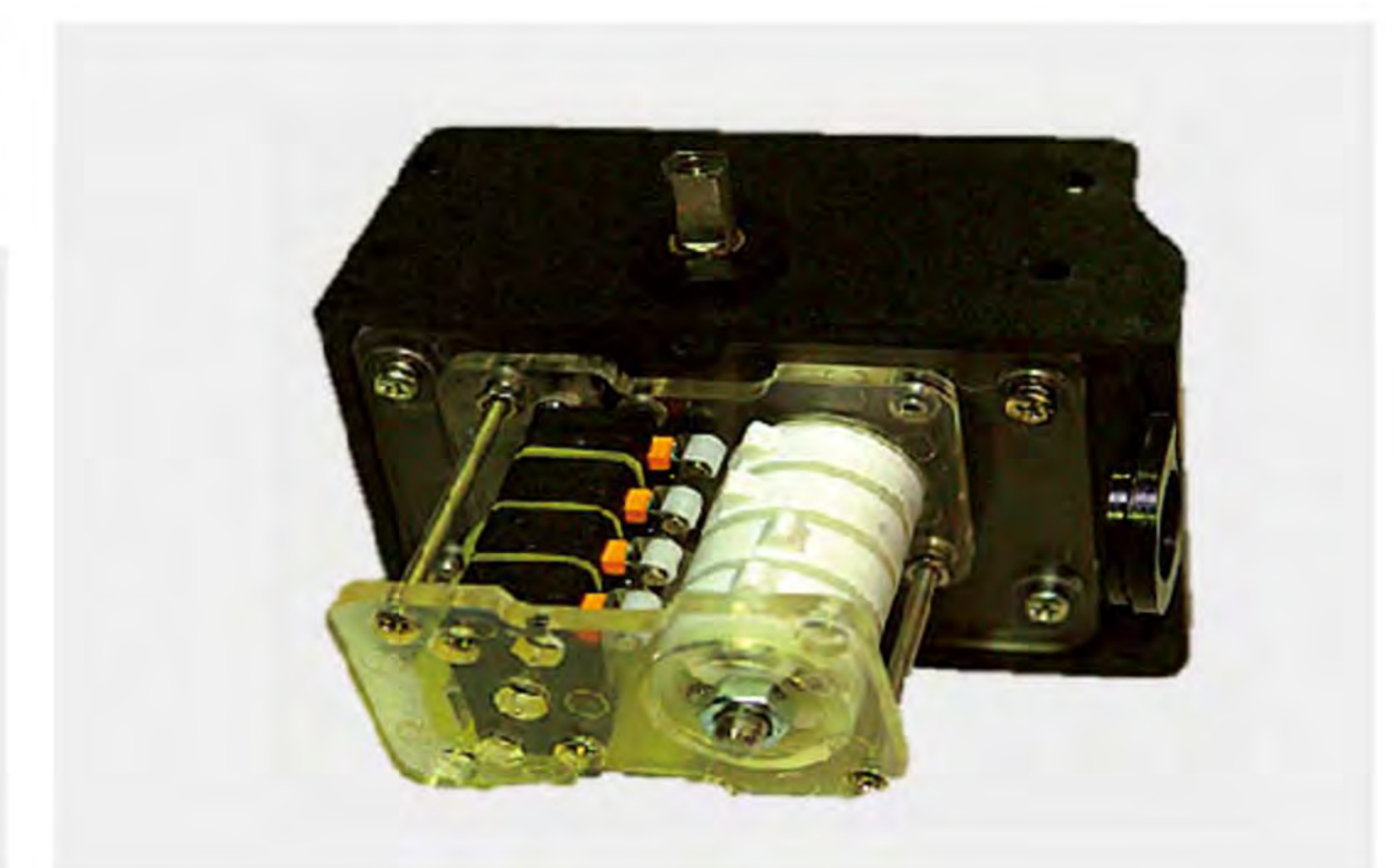
» DRUM BRAKE Power-off and Over-speed Holding Brake

- ★When the drum is working, the brake is open. When the power off or overspeed fault occurs, the ratchet mechanism triggers, and the pawl immediately locks the drum to prevent the ladle from falling.
- ★Power-off & Over-speed holding brake, double protection.

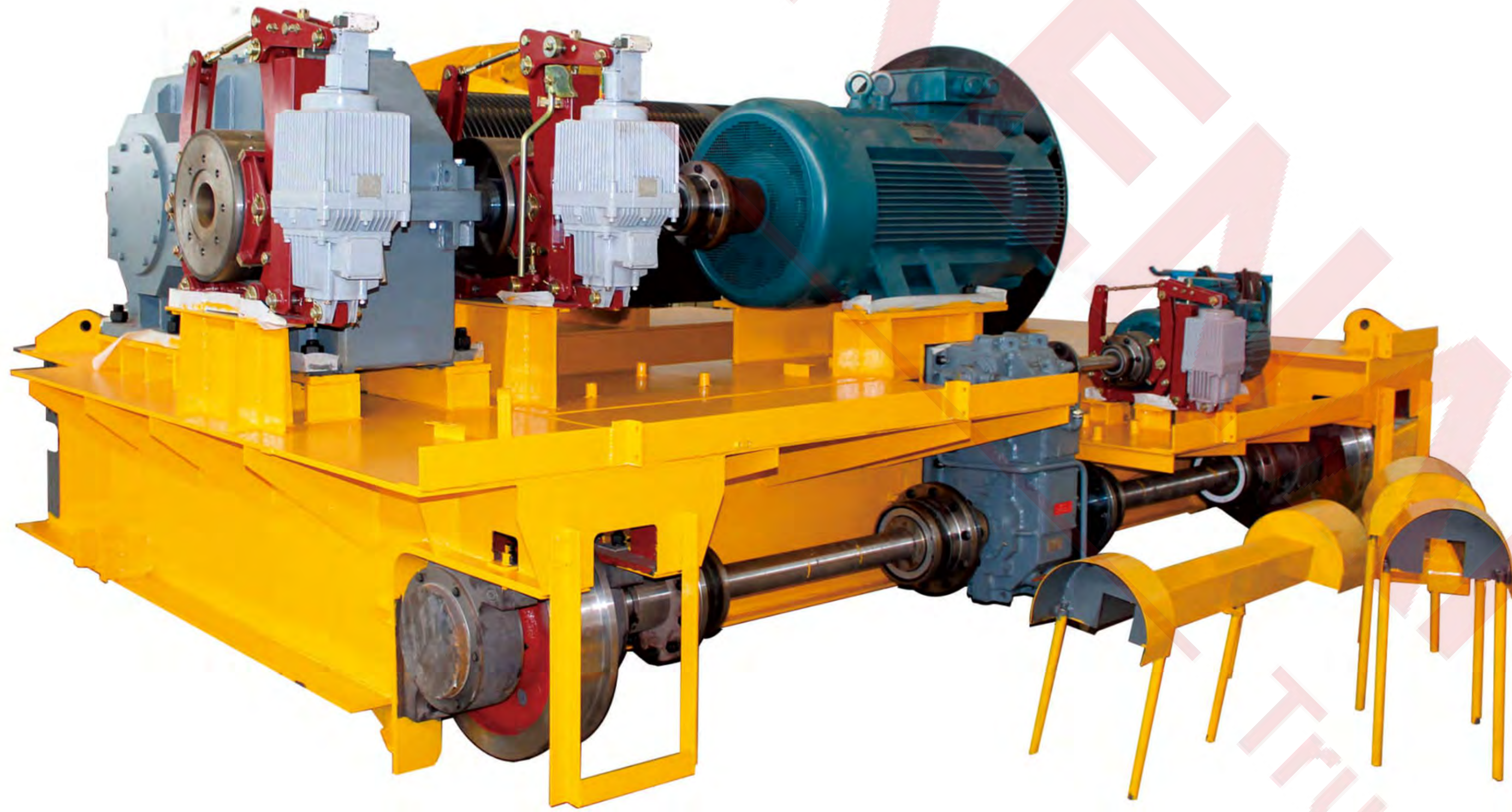


» LIFTING LIMIT SWITCH Rotating limit switch + Hook Approaching Limit Switch

- ★ 4-steps adjustable rotation switch
- ★ Lower, slow-down, Upper, Top
- ★ Phase sequence control



LADLE CRANE OPEN WINCH TROLLEY

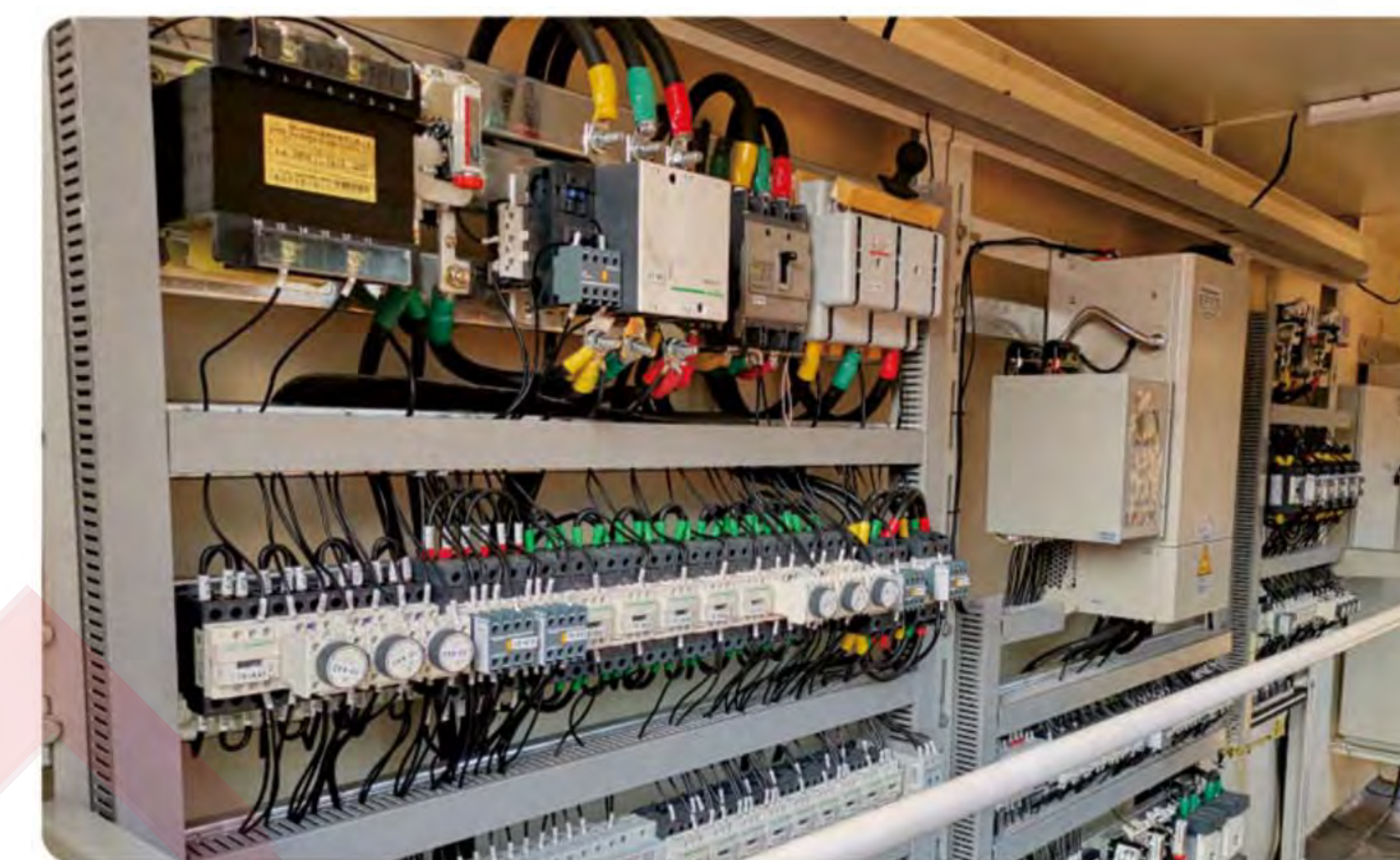


安全性能
Safety
Performance



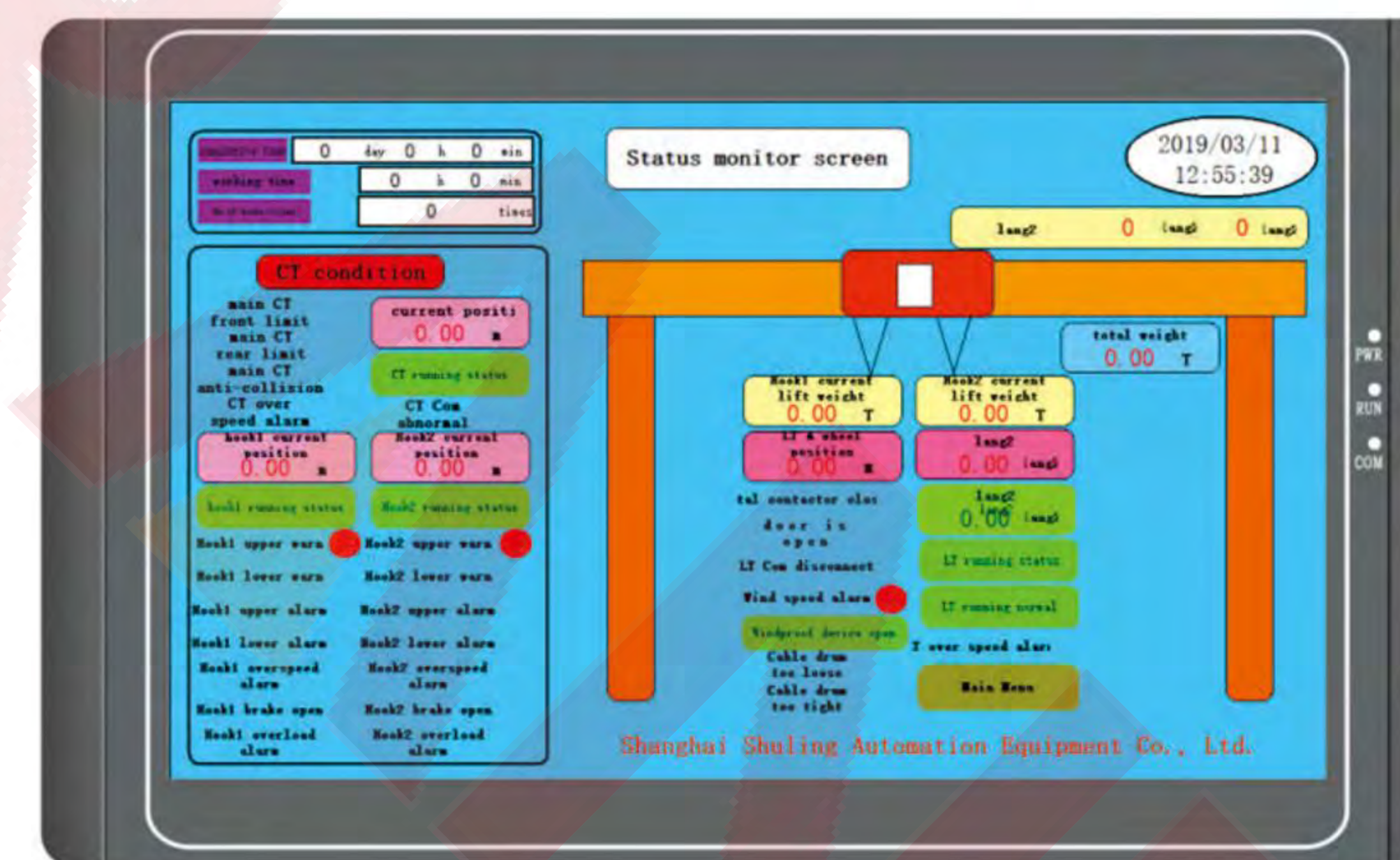
Robust Design:

- ★ Slip ring motor, high starting torque with low starting current.
- ★ Multiple safety features: Double lifting electro-hydraulic brakes, wire rope drum electromagnet disc brake, balance arm for anti-dropping, safety operation monitoring system.
- ★ Electric room including stator control for stepless speed regulation with industrial cooler.
- ★ Main girder heat insulation and heat resistance cable.
- ★ Hardened tooth surface gear box.



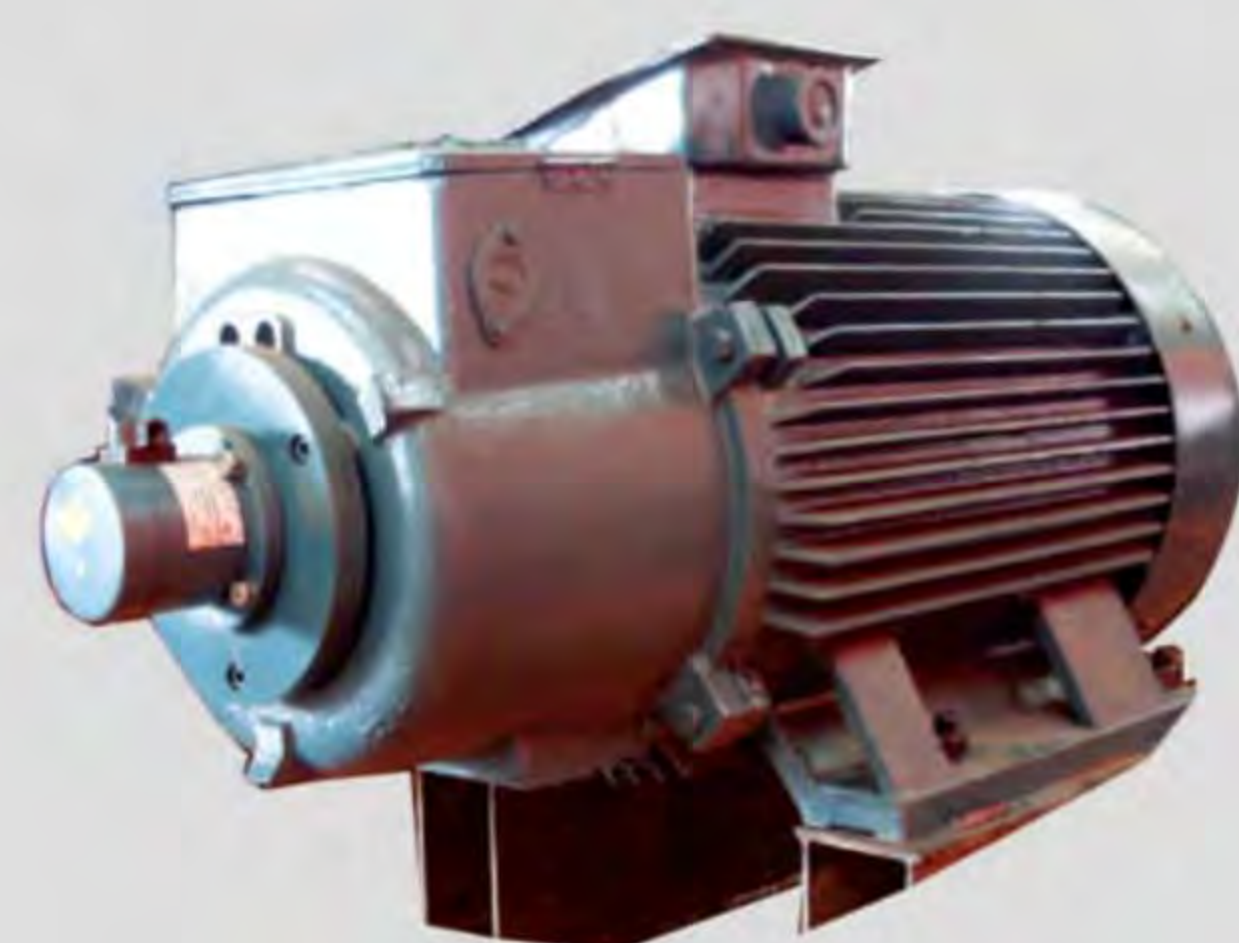
Electric Room

- ★ Electric room IP 54 protection class
- ★ Industrial cooler
- ★ Stator stepless speed control
- ★ Schneider brand electric parts



Safety Monitor System

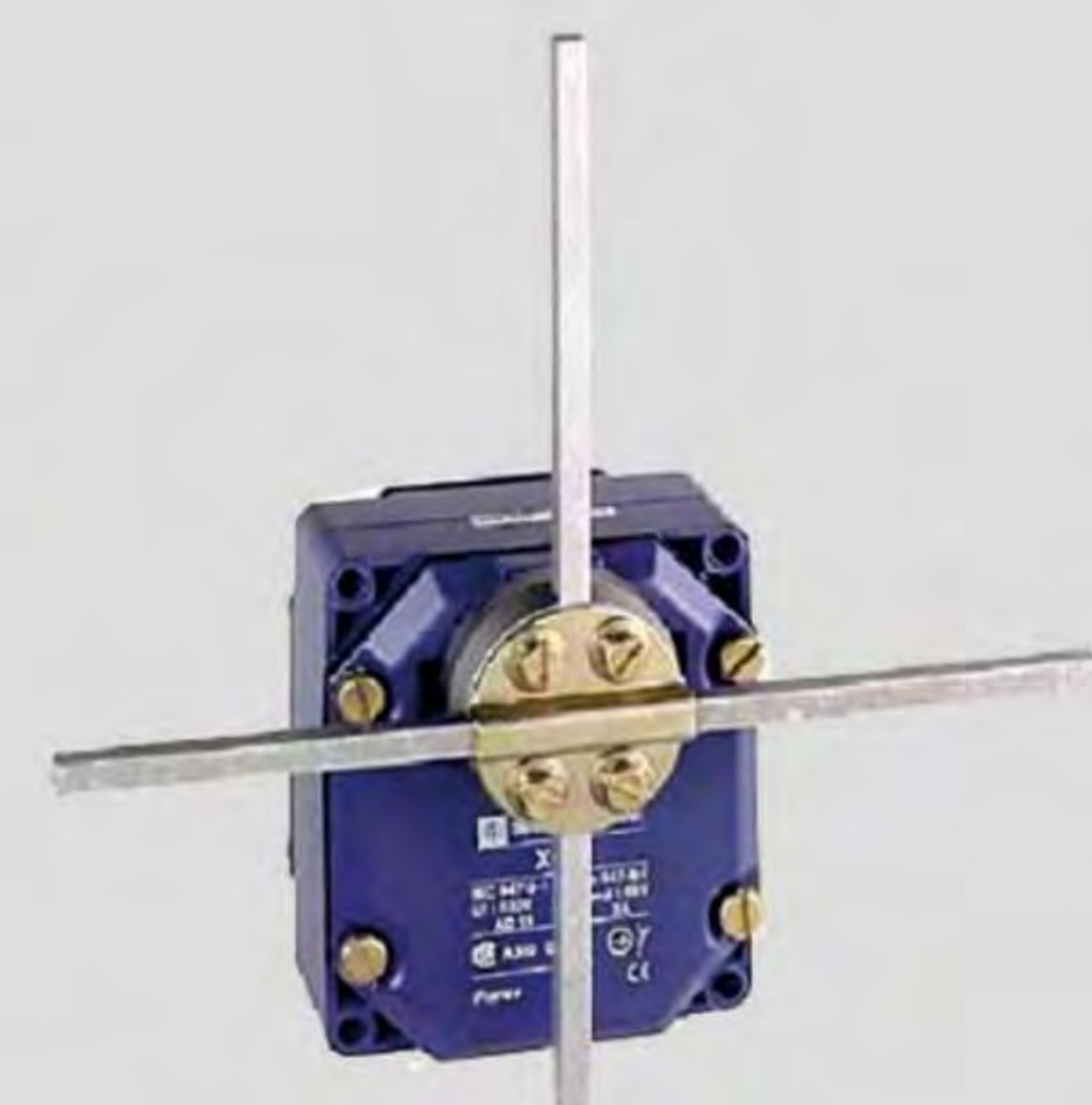
- ★ Total running time
- ★ Crane loading status
- ★ Motor, brake, limit switch monitoring
- ★ CCTV real time monitoring
- ★ Multiple safety alarm



Slip Ring Motor



Hardened Gear Box



Cross Travelling Limit Switch



Overload Limit Switch & Rotary Limit Switch



Electromagnetic Disc Brake



Centralized Lubrication System



Load Weighing Scale



Master controller

METALLURGY OVERHEAD LADLE CRANE

★Double girder overhead foundry crane is one of the main equipment in the continuous casting technology of steel manufacturing. It is mainly used for molten metal transport, casting and hot metal charging.

★The crane is equipped with a separate electrical room with cooling system inside. A thermal baffle is set along the span direction at the bottom of the girder to protect crane structure from heat radiation of molten iron.



TECHNICAL DATA SHEET

Capacity(t)	Lifting Height(m)		Speed (m/min)				Total Power (kw)	Recommended Rail (kg/m)
	Main Hook	Aux Hook	Main Hook	Aux. Hook	Trolley	Crane		
16/3.2	12	15	2.5~9	9	20~38	30~70	19.4~49.5	52.8
20/5							27.5~62.5	
25/5							28.1~72.9	
32/5	15	17	2~9	9	20~38	30~80	29.7~110	63.69
40/5							30.5~111.5	
50/10	21	23	1.5~7	9	18~30	30~70	46.4~130	88.96
63/10							46.4~157	
75/20							26	

TECHNICAL DATA SHEET

Lifting Capacity(t)	125/32	140/32	160/32	180/50	200/50	225/65	240/80	280/80	320/80	
Working Class	M7-M8									
Span(m)	19	19	27	28.5	28	27	22	22	24.5	
Lifting Height(m)	Main Hook	24	22	25	27	26	32	25	29	28
	Aux. Hook	26	24	26	29	26	34	27	29	32
Speed (m/min)	Main Hook	7.6	7.8	9.8	7.5	6	11	7	12	7.5
	Aux. Hook	9.7	9.7	12	10	10	11	9.6	10	10
	Main Trolley	38	36	43.5	40	41	41	35	40	29
	Aux.Trolley	39	37.5	43.5	38	38	39.5	38	40	39
Crane	76	73	84	80	78	84	80	80	80	58
Max Wheel Load(KN)	505	535	485	525	530	550	545	735	750	
Steel Track Recommended	QU120									
Power Source	380V 50HZ 3-phase A.C or Customized									

ELECTROMAGNET OVERHEAD CRANE



★Electromagnet overhead crane consists of bridge structure, long traveling mechanism, trolley, electric control system and electromagnetic chuck. All the motors are special type for cranes, which have large starting torque and loading capacity. Magnet is customized according to requirement, and 10-30 back-up system is optional for magnet once the power is off.

TECHNICAL DATA SHEET

Lifting Capacity	t	5	10	16
Span	m	10.5-31.5		
Lifting Height	m	16		
Speed	Hook/Magnet	15.6	13	13
	Trolley Traveling	39.5	43.8	44.5
	Crane Traveling	92.7/93.7	92.7/93.7/86.4	76/89
Magnet	Model	MW5-110L	MW5-180L	MW5-210L
	Rated Load	1000	2750	3500
	Dead Weight	1500	4500	7500
	Diameter	mm	1100	1800
Steel Track Recommended		43kg/m		
Working Class		M5-M6		
Power Supply		3-phase A.C 50HZ 380V or Customized		

SCRAP YARD GRAB GANTRY CRANE

性能描述 Performance description

★Scrap yard gantry crane is mainly attached with hydraulic grab or circular magnet. The crane standard capacity is 5-50T, which is using for loading and unloading steel scrap/ metal from open yard into truck or vibrate trolley, the work duty is from M5 to M8 heavy duty steel mill cranes.



TECHNICAL DATA SHEET

Lifting Capacity	t	5	10	16	20
Span	m	10.5-31.5			
Speed	Lifting	6-15			
	Trolley Traveling	20-40			
	Crane Traveling	20-60			
Control Model		Cabin remote control			
Working Class		M5-M8			
Steel Track Recommended		43kg/m or QU70			
Power Supply		3-phase AC 50HZ 380 or Customized			

ROTATING TROLLEY OVERHEAD CRANE

★Trolley rotating magnet overhead crane is mainly used to lift and transfer steel plate, pipe, profile steel, steel bar, steel billets, steel coil, or large material in steel mill, shipyard, port yard, etc. The trolley could horizontally rotate to meet different working demands. The working class is up to M8, the crane lifting capacity includes the dead weight of magnetic lifters, the capacity reaches 25t+25t and is available to be customized.



MAGNET SPREADER OVERHEAD CRANE

★Magnet spreader overhead crane is special designed to handle long or big steel material in finished shed, such as steel bar, steel pipe, steel plate, etc. Magnet spreader overhead crane can be designed to be parallel or perpendicular to the main beam of the crane according to the users' site conditions.

★Customer can choose motorized rotation type magnet spreader overhead crane to change the load direction.

★For high temperature working condition, electric room with cooling system, heat insulation cable.



TECHNICAL DATA SHEET

Capacity	t	5+5	10+10	16+16	25+25
Crane Span	m	10.5-34			
Lifting Height	m	10-16			
Speed	Lifting	12.4-16			
	Trolley Travelling	32-44			
	Crane Travelling	85-107			
	Rotating	1.36-1.85			
Max. Wheel Load	KN	65	210	260	335
Total Power	KW	50.2	128	151-196	243.5
Working Class		M6-M8			
Steel Track Recommended		43kg/m	QU80		QU100
Power Supply		3-phase A.C. 50HZ 380V or customized			

TECHNICAL DATA SHEET

Capacity	t	5+5	7.5+7.5	10+10	16+16
Crane Span	m	10.5-31.5			
Lifting Height	m	12-16			
Speed	Lifting	10-16	15.3	15.2	13.6
	Trolley Traveling	38.5-44	44.6	44.6	42.4
	Crane Traveling	84.7-116	101-112	101-112	86-101
Max. Wheel Load	KN	109-166	148-214	171-243	251-344
Trolley Weight	t	5.9	7.1	7.6	13.8
Working Class		M6-M8			
Steel Track Recommended	Trolley	P18	P24	P24	P43
	Crane	P43	P43	P43/QU70	P43/QU70
Power Supply		3-phase A.C. 50HZ 380V or Customized			

» COLD/HOT ROLLING MILL OVERHEAD CRANE

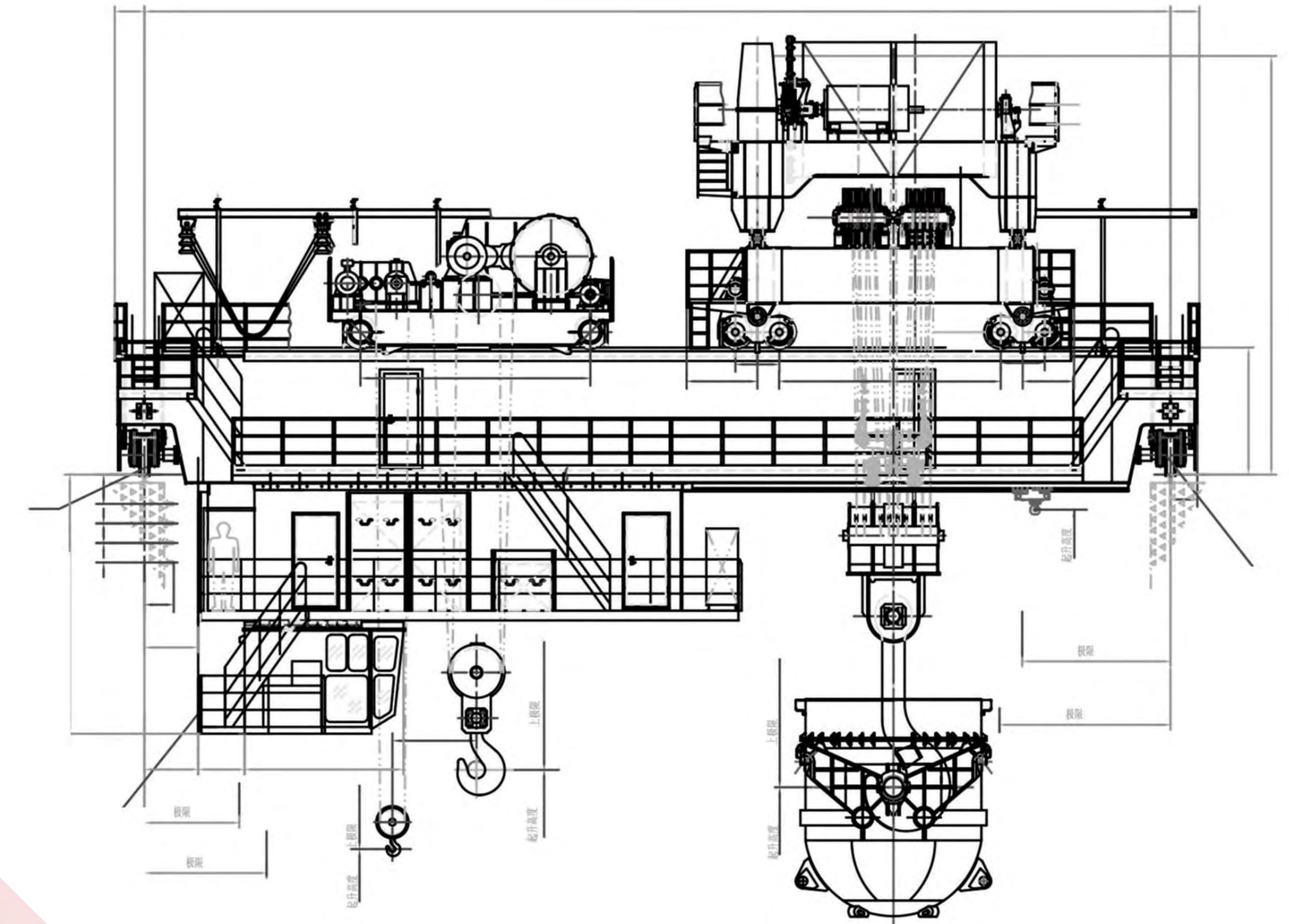


★Heavy duty open winch overhead crane is performing a very important role in cold or hot rolling mill for coil handling. This type overhead crane is used in pickling shed, cold rolling shed, rewinding shed, annealing shed, storage bay, etc.

TECHNICAL DATA SHEET

Lighting Capacity (t)	5	10	16	20	32	50	
Span(m)	10-40						
Lifting Height(m)	12-25						
Speed (m/min)	Lifting	0-9	0-8	0-7	0-6	0-5.3	0-4
	Trolley Travelling	3.0-30					
	Crane Travelling	6.0-60					
Control Model	Cabin or Remote Control						
Working Class	M5-M8						
Steel Track Recommended	43kg/m or QU80						
Power Supply	Three-phase A.C.380v 50HZ or Customized						

» FOUR GIRDER LADLE CRANE DESIGN



- ★Flat-type reducer, the trolley frame and the reducer are one body design.
- ★Reducer with a ratchet pawl to avoid accidents.
- ★Upper trolley frame is supported by flexible gimbal support.
- ★Ball-wound drum coupling to effectively adjust the deformation of the heavy-duty .
- ★Fixed pulley block adopts modular design.
- ★Wheels uses a 45-degree split wheel, with jack lifting pad.
- ★Adjustable bail arm distance applied to different ladles .
- ★Adopt 4 girder 6 rail design to reduce the weight of the main girder and distribute the wheel load to increase the bearing capacity.
- ★All electrical components are fully enclosed inside the main beam, equipped with a cooling system to extend the service life .
- ★The driver's cabin adopts large-view double-layer insulation with shock absorbers and adjustable aviation seats.

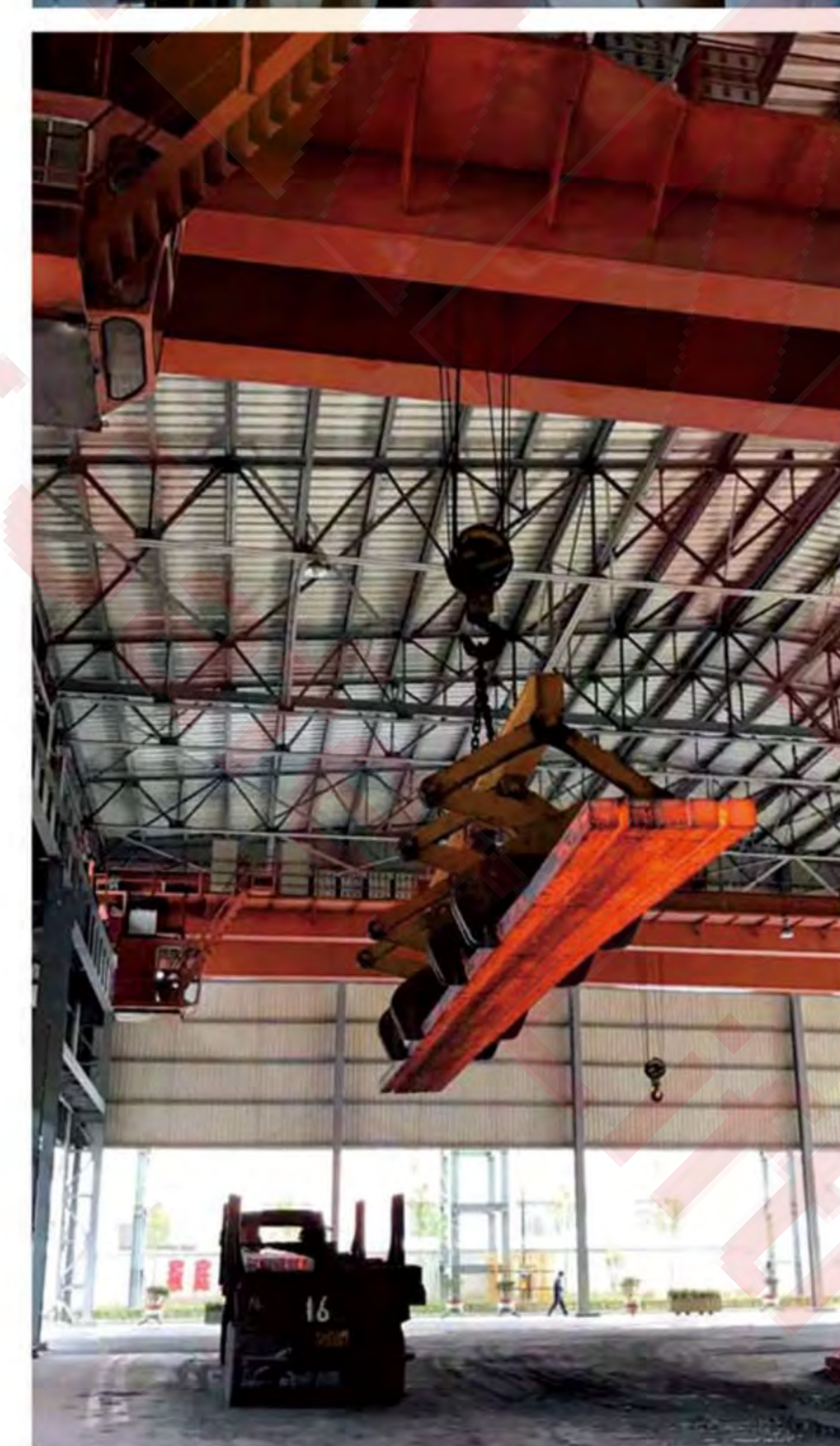
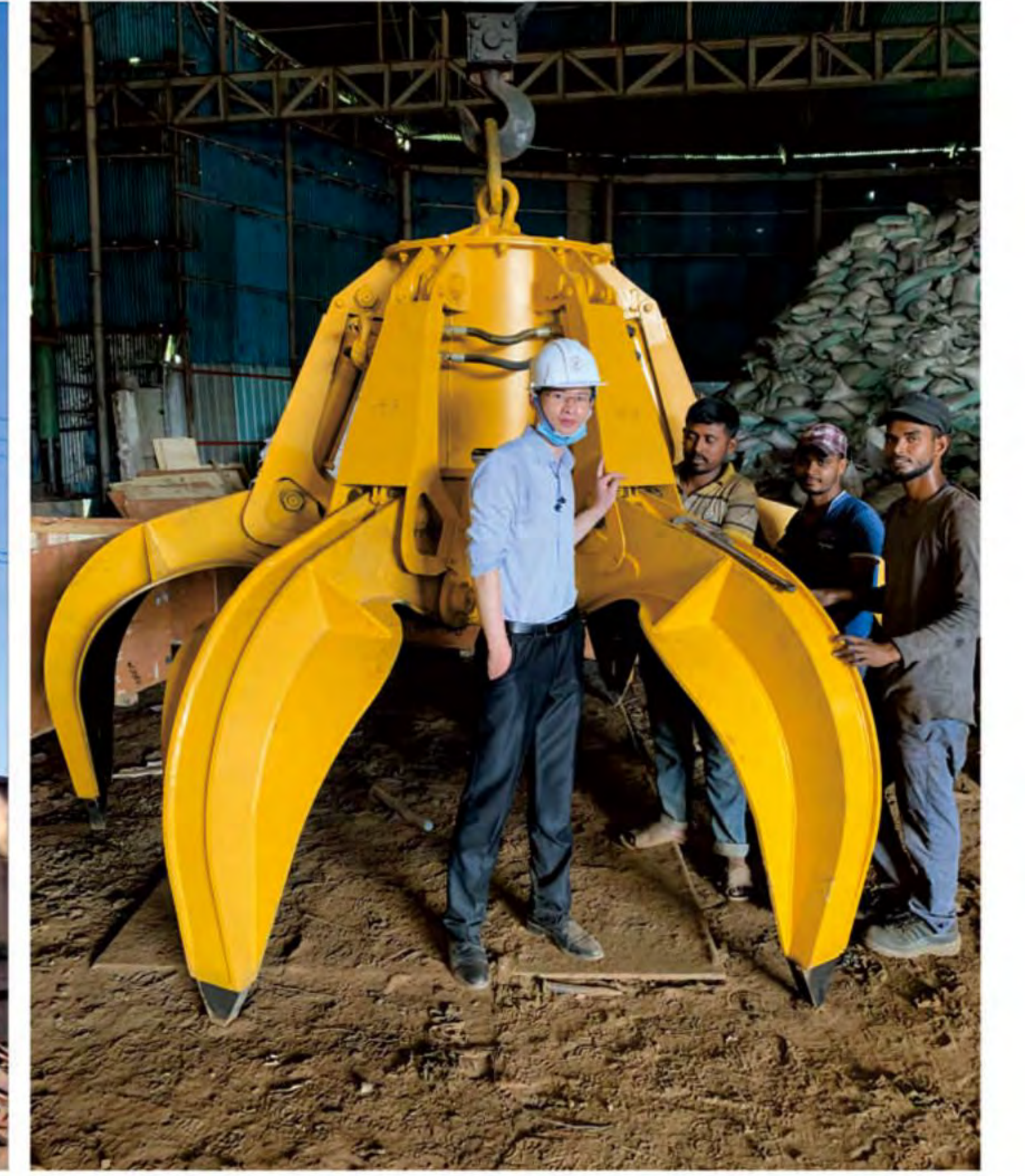
TECHNICAL DATA SHEET

Hoist Mechanism					CT Mechanism			LT Mechanism		
Capacity	310 t	80 t	20 t	10 t	Wheel Distance	4080 mm	4800 mm			
Lifting Height	26m	29.5m	31.5m	29m	Rail Distance		3700 mm	34500 mm		
Lifting Speed	1-10 m/min	1-10 m/min	1-10 m/min	1-10 m/min	Travelling Speed	4-40 m/min	4-40 m/min	8-80 m/min		
Working Class	M8	M7	M7	M5	Working Class	M7	M7	M7		
Motor	Model	M3BP400LKB6HC	M3BP355SMB6HC	M3BP280SMB8H	Motor	Model	M3BP200MLB6H	M3BP200MLB6H	M3BP315SMC8H	
	Power	450kW×2	200kW	45kw		18kw	Power	22 kW×4	22 kW	90 kW×4
	Rpm	980r/min	980r/min	750r/min		2850r/min	Rpm	980r/min	980r/min	735r/min
Power	AC 3000V 50Hz									

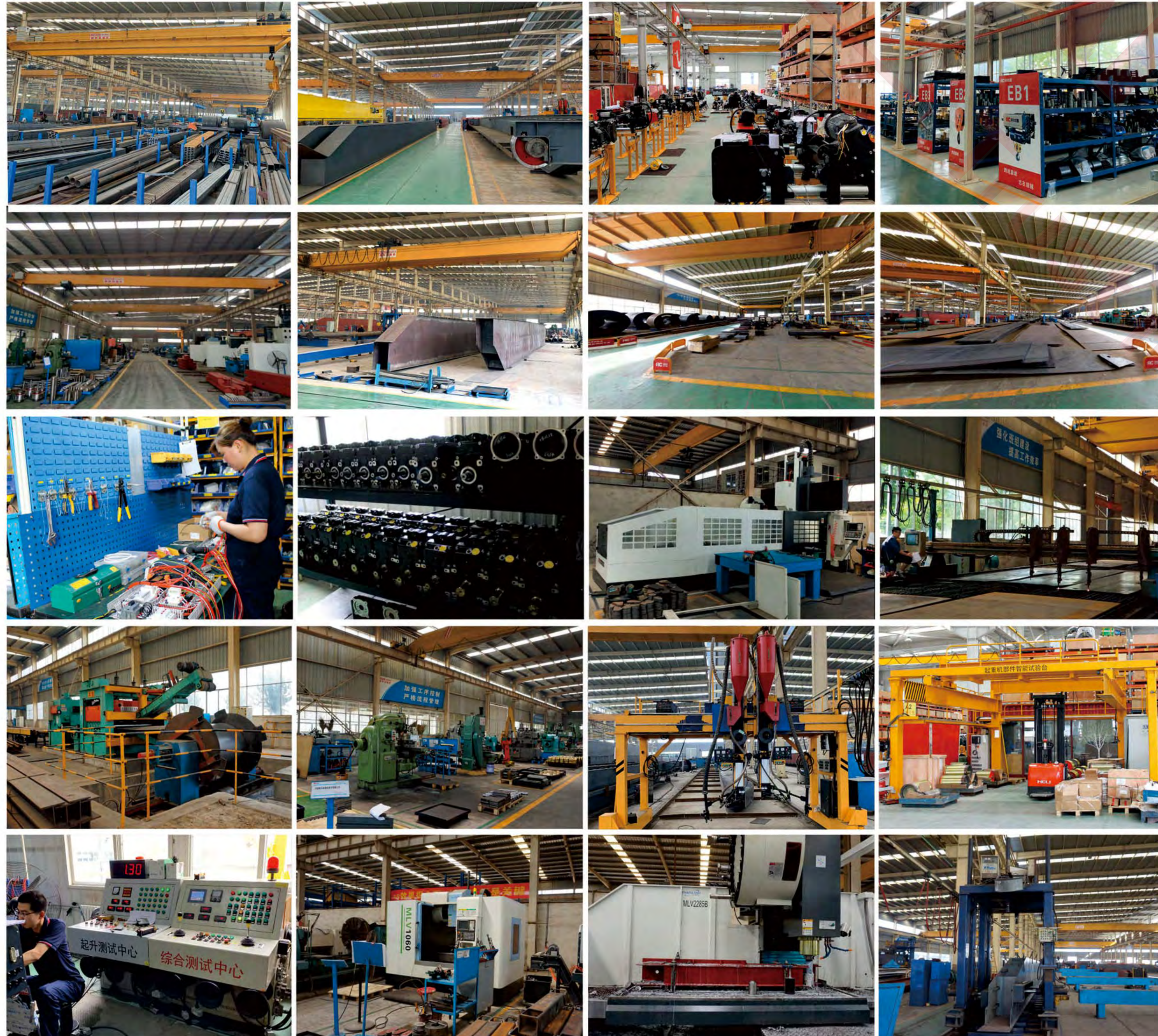
» SPECIAL LIFTING SOLUTION



» LIFTING TOOLS



FACTORY VIEW



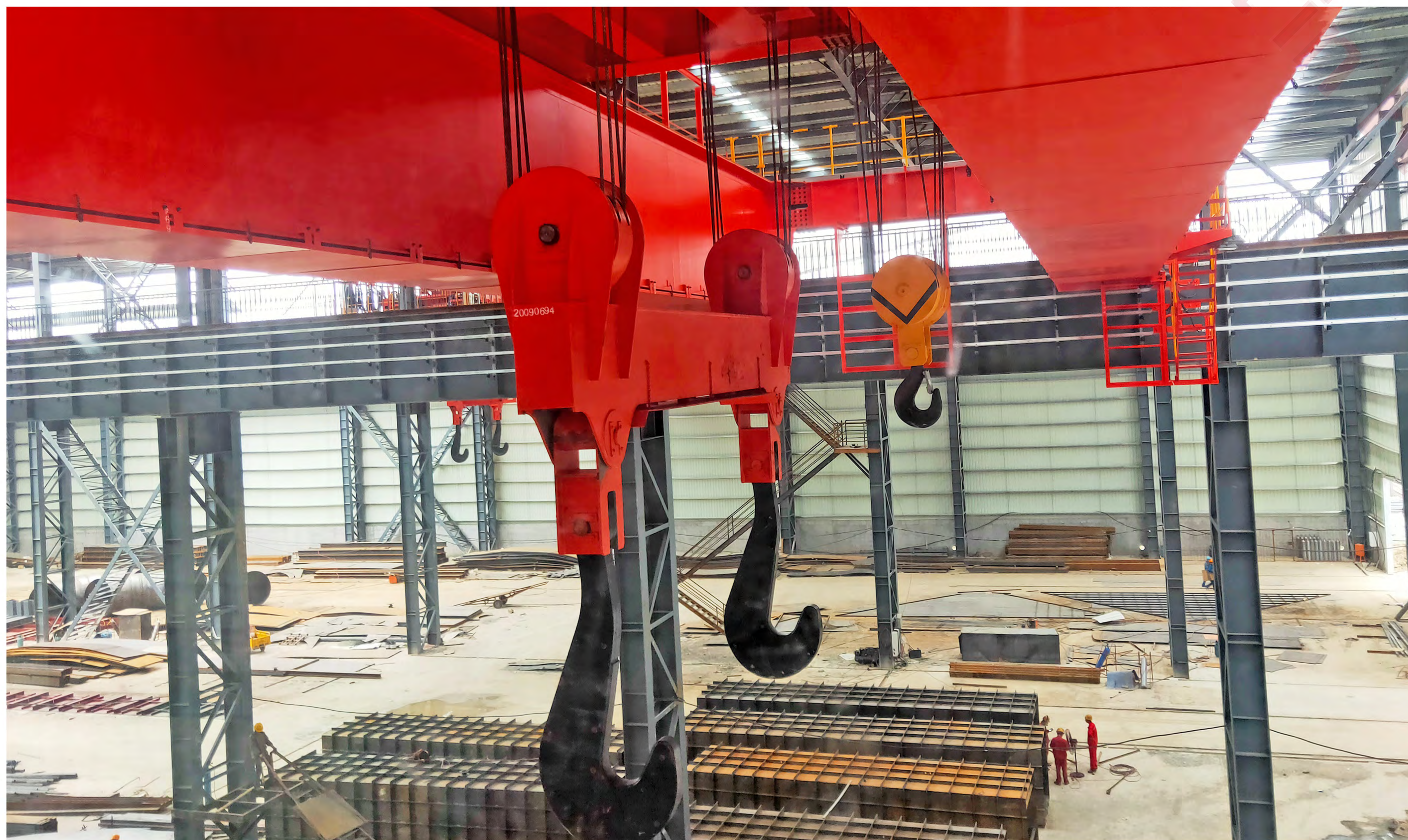
CUSTOMER VISITING

比肩国际 遥遥领先
International Class, Supreme Quality



跨越巅峰 志在超越
Over the top, keeping surpassing

» **SPECIAL LIFTING SOLUTION**



» **SPECIAL LIFTING SOLUTION**

